



K J SOMAIYA COLLEGE OF ARTS AND COMMERCE

AUTONOMOUS



PROSPECTUS

2023-2024

K J SOMAIYA COLLEGE OF ARTS AND COMMERCE
AUTONOMOUS

| <u>CONTENTS</u> | | |
|------------------------|---|-----------------|
| Sr. No. | Content | Page No. |
| 01 | A Message from our Founder | 2 |
| 1A | Our Mentor | 3 |
| 02 | At the Helm of Vidyavihar | 4 |
| 03 | Our Collective Vision | 5 |
| 04 | About Somaiya Vidyavihar | 6 |
| 05 | From the Principal's Desk | 7 |
| 06 | About our College | 8 |
| 07 | Eligibility B. A. / B. Com. | 21 |
| 08 | B. A. Degree Course | 22 |
| 09 | B. Com. Degree Course | 28 |
| 9A | Examination and Evaluation Procedure (under Old Structure) | 33 |
| 9B | Revised Examination Scheme (BA and B Com) | 35 |
| 10 | Standard of Passing | 38 |
| 11 | Introduction to examination and evaluation (Under National Education Policy) | 41 |
| 12 | Fee Structure B A | 45 |
| | Fee Structure B Com | 46 |
| | Fee Structure M Com | 47 |
| | Fee Structure M A (English, Marathi, Philosophy, History, Sociology, Psychology) | 48 |
| 13 | List of Toppers | 52 |
| 14 | Attendance and Other Rules | 55 |
| 15 | Our Staff Members | 56 |
| 16 | Counter-wise Work Distribution | 61 |
| 17 | Academic Calendar: 2023-24 | 62 |
| 18 | The list of Members of the Academic Council | 64 |
| 19 | Managing Council of Somaiya Vidyavihar | 66 |
| 20 | Governing Body | 68 |
| 21 | Contact Information | 69 |



Our Founder

Padmabhushan

(Late) Pujya Shri Karamshibhai J. Somaiya

(May 16, 1902-May 9,1999)

A Message From The Founder

My dear young students !

Welcome to you to the Institutions of Vidyavihar!

Your finest hour is here. The future Belongs to you.

*Let us all zealously work together and
Dedicate ourselves to build India of our Dreams.*

*Remember, nothing was ever achieved
Without hard work. Be bold but not Bowled over.*

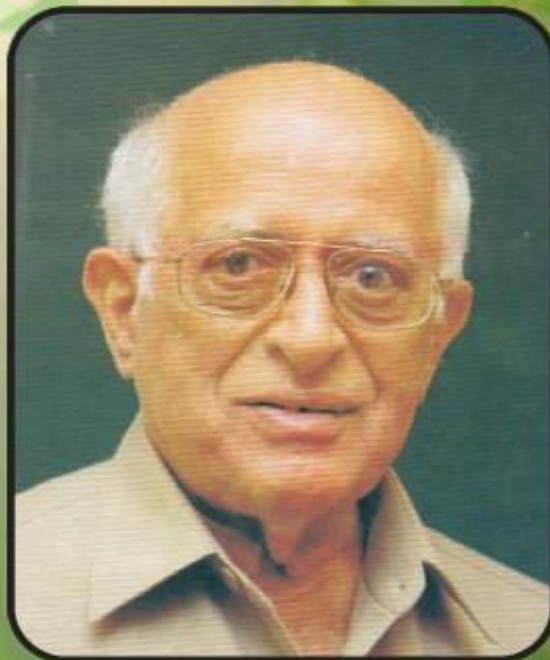
*Let Truth and Duty be your watchwords.
Never despair in the face of setbacks.*

*Keep courage and continue to work with Fortitude
Have faith in yourselves and in the Almighty.*

Strive for your Goals and the future in yours!



Our Mentor



Puja (Late) Dr. Shantilal K. Somaiya
29.12.1927 - 01.01.2010

At the Helm of Vidyavihar



Shri Samir S. Somaiya
President
Somaiya, Vidyavihar



Smt. Leelaben Kotak
Trustee

Our Collective Vision

Our Founder, Padma Bhushan Shri K. J. Somaiya founded Somaiya Vidyavihar on the 9th of September 1959. He later founded the Girivanvasi Pragati Mandal, the K. J. Somaiya Medical Trust, Girivanvasi Education Trust and sister institutions to make great citizens of India and the World. In the words of Swami Vivekananda, "We want that education by which character is formed, strength of mind is increased, the intellect expanded, and by which one can stand on one's own feet." We have now grown into a multi-disciplinary and multi-campus education institution.

Our motto is: **ज्ञानादेव तु कैवल्यम्** | Knowledge alone liberates. Education liberates from poverty, from hunger. Also liberates one from the attachments that bind us to small-mindedness. Knowledge also provides opportunity. To make the life lived more meaningful. In the service of one's family, one's community, one's समाज, country, and indeed the world.

Bearing in mind that there is no religion other than the life lived in the service of humanity, **न मानुषात् परो धर्मः**: We will strive to provide access and opportunity to build a more inclusive society.

Our education in any subject will reflect its timeless fundamentals, its current context, and applications. There is so much scientific discovery taking place, at the intersection of fields, of biology, computing, medicine, the social sciences and everywhere else. We will provide students and faculty with an environment to engage this world, to discover new truths, make new applications to create and share knowledge.

Our education will also be experiential. With projects that are 'real' and those that complement the learning inside the classroom. Our students and faculty will be at the cutting edge of change, to incubate companies, to create NGOs, and pursue any field of their passion.

Our education will also be holistic. Sports and physical exercise must be a firm part of the curriculum. For students to develop a love for sports, for recreation, for health, for teamwork, for competition.

Our education will also instill an appreciation for art and culture.

In the Bhagavad Gita, Arjun asks Krishna how is one to control one's mind that is as fleeting as the wind. Krishna responds that it can only be done through practice and discipline. **वैराग्येण**

तु कौन्तेय अभ्यासेन च गृह्यते | We will strive to teach our students to learn to stay calm in our turbulent world.

And our education will also include the ancient Indian tradition, its culture, its depth, and its knowledge. We must keep the connection with our mother tongue and our languages. Languages are storehouses of culture, and the loss of a language takes with it much learning, stored through it over the ages.

Finally, our education will help students lead a full life, to fall in love with life.



About Somaiya Vidyavihar

Padmabhushan Karamshibhai Jethabhai Somaiya founded Somaiya Vidyavihar an education trust in 1959, to provide quality holistic education. It was founded on the belief that education is an important pillar of nation building with the power to change lives, and that it is the duty of the privileged to help provide it to whoever aspires to be educated.

Somaiya Vidyavihar encompasses 34 institutions, with more than 39,000 students and 1,500 faculty. Its educational institutes are spread across two main campuses - a 50-acre complex in Vidyavihar and a 28-acre complex in Sion both located in the heart of Mumbai besides a number of smaller campuses across rural Maharashtra, Karnataka and Gujarat. Currently we offer Degree, Diploma & Certificate courses at Undergraduate, Postgraduate and Doctoral levels. Somaiya Vidyavihar also runs a few autonomous Post-Graduate Courses, Vocational Training Courses and High Schools.

Somaiya Vidyavihar fosters an ecosystem that excels in education, research and service, a place where knowledge is preserved, disseminated and new knowledge is created. It is known as much for its Science, Technology, Medicine, Engineering, Management, Social Sciences and Commerce programs, as for its programs for academic studies in various Faiths and Cultures of India.

Shri K.J. Somaiya guided Somaiya Vidyavihar until 1999, his son Dr. S.K. Somaiya was at the helm of affairs till 2010. Currently of at present Shri Samir Somaiya, a Cornell University and Harvard Business School alumnus is the President.

Our motto **ज्ञानादेव तु कैवल्यम्** | Knowledge alone liberates remains the bedrock, as we strive to expand and continuously innovate our education.

(www.somaiya.edu)

From the In-Charge Principal's Desk



Dear Students,

As we embark on the academic year 2023-2024, I am delighted to share our unwavering commitment to academic excellence and holistic development. This year holds immense promise as we continue to adapt and evolve, fostering quality education that goes beyond the boundaries of traditional learning.

Our institution believes in embracing a comprehensive approach to education, one that extends beyond the classroom. While academics are fundamental to our mission, we also place significant emphasis on social outreach and lifelong

learning.

Through our National Service Scheme (NSS) and National Cadet Corps (NCC) initiatives, we actively encourage students to engage in community service and leadership development. These programs empower our students to become responsible citizens who contribute positively to society.

Department of Lifelong Learning and Extension (DLLE) is an initiative designed to provide a platform for continuous learning, ensuring that our students acquire skills and knowledge that extend far beyond their time here.

We firmly believe that the performing arts and social engagement are vital components of a well-rounded education. By nurturing talents in music, dance, drama, and other performing arts, and encouraging active participation in NSS and NCC, we aim to enrich your educational journey and develop individuals who are not only academically proficient but also socially responsible.

As we embark on this academic year, let us remember that academic excellence is just one facet of our holistic approach. Our institution remains a place where knowledge flourishes, creativity soars, and students grow into well-rounded individuals who actively contribute to their communities.

I extend my warmest wishes to every member of our institution. Let us embrace the opportunities and challenges of the year ahead with enthusiasm, a commitment to academic and artistic excellence, and a dedication to social responsibility.

Dr. (Smt.) Veena Sanekar
In-Charge Principal

About Our College



In September 1959, a philanthropist and visionary Shri Karamshibhai Jethabhai Somaiya in an inspired moment envisaged the blending of spiritual education along with Advanced Science Education which eventually gave birth to Somaiya Vidyavihar.

In the following five decades the Somaiya Vidyavihar campus grew to thirty-five institutions catering to the needs of students from primary to post graduate level. The educational conglomerate located in a lush green campus admeasuring sixty acres of land at Vidyavihar and thirty-five acres at Sion Chunabhathi in the eastern suburb is an institution to be reckoned with Somaiya Vidyavihar is recognized both nationally and internationally. Dr. S. K. Somaiya, the worthy son of the founder of Somaiya Vidyavihar has provided a dynamic leadership which is continued by present President, Shri Samir Somaiya for an exponential growth and diversification of these institutions.

The K. J. Somaiya College of Arts & Commerce is one of the premier institutions in the Somaiya Vidyavihar campus, enjoys a linguistic minority status and is permanently affiliated to the University of Mumbai and recognized by UGC under 2(f) and 12(b) of U.G.C. Act.

The process of re-accreditation for the College is a progressive realization of its goals for the College. It is an on-going sojourn in a pre-determined direction and purpose. Presently the institution is poised for an Exponential growth and taking upon the autonomous status for itself so that academic excellence can truly be promoted which is, cherished goal of different stakeholders.

On January 8, 2004, the college was conferred 'B' Grade by the National Assessment and Accreditation Council. The College has been re-accredited and awarded "A" grade with a CGPA score of 3.27 by NAAC recently on 4th September, 2010. The college was conferred with AUTONOMOUS Status by U.G.C. vide letter no. F.22-1/2011(AC) dated 3.11.2011 and University of Mumbai vide letter no. Aff./ICD/2012-13/1/887 dated 19.10.2012.

The college was recognized by UGC for period of 2016-2021 as a "College with Potential for Excellence" vide letter no. f12-1/2010/2015(NS/PE) dated 27th May 2016. The college is ranked 4th in Maharashtra and 21st in India as per April 2020 survey of Eduworld. The College is reaccredited and awarded 'A' grade with CGPA score 3.33 in the third Cycle by NAAC recently in the month of September 2016.

The College has acquired a vibrant atmosphere due to co-curricular and extension activities. The NCC Unit has brought laurels in the form of the Vice-Chancellor's banner for three years. The NSS Unit has built a strong bond through community service in the areas of health crises preparedness, gender sensitization, building of life-skills, environmental enrichment and conservation.

Presently the institution is poised to take upon the autonomous status for itself so that academic excellence can truly be promoted, which is cherished goal of different Stakeholders.

International Linkages

Somaiya Vidyavihar as a Trust has MoUs / international linkages in place with the Universities of Vaasa, Finland, University of New Castle, Australia, University of Applied Sciences, Upper Austria, IMC University of Applied Sciences, Krems, Austria, University of Uttar Malaysia, Management Development Institute of Singapore, University of Navarra and Duale Hochschule Baden, Wiirttemberg.

Our Quality Policy

We at Somaiya group promise to deliver to the parents, students and the community at large an educational environment constantly being monitored, tailored and adapted to their needs through our great dedication for continuous improvement.

Objectives of our College

- To provide a strong basis for learning.
- To train and guide young students to excel and develop a spirit of competition.
- To provide opportunities for the development of skills, capabilities and talents.
- To promote excellence in the students through:
 - Participation in interdisciplinary activities
 - Participation in extracurricular and co-curricular activities.
 - Participation in Seminars, Workshops, Debates, Group Discussions etc. at the collegiate and inter-collegiate level.
- Exposure to eminent and distinguished persons in different fields through talks and programs.
- Financial and other assistance to deserving students.
- To promote - Regularity, Punctuality & Discipline among students.

Unique Features

- Our College is the Parent institution of Somaiya Vidyavihar
- Well-equipped Library with Computer and Internet facilities
- Parents' Meeting arranged twice a year
- Emphasis on Value education through teaching of Gita/Ethics
- Remedial classes for SC and other weaker students.

Certificate Courses

- Digital Marketing Course
- Film Making Course
- Diploma in Soft Skills
- Saral Hindi
- Micro-Skills in Counseling
- Chitrapat Abhyas

Diploma Courses

- Computer and Language Expert
- Journalism in Gujarati

Students can pursue a Dual Degree from the college.

Our Staff

The College has 56 faculties at the Senior College level. We have 25 Ph. D holders and 08 M. Phil qualified teachers. The teachers are well experienced, committed, knowledgeable, research and result oriented in their approach. Through continuous participation in pro-active conferences, seminars, workshops, refresher courses, orientation programs and research activities, teachers have kept themselves updated in their knowledge and skills and are fully prepared to face the challenges of teaching in a fast-changing global environment.

Our College Office is fully computerized, wide and spacious, has 15 qualified, trained and experienced staff and 30 helping hands excluding 8 unaided non-teaching staff and it is also a backbone of the college dedicated in rendering service with human-touch.

Student Support Facilities

I. Library: An 'Open Door to the Bank of Knowledge'

[<http://education.vsnl.com/kjsac/library>]



1. Established in 1960, spacious and airy, it is the oldest and biggest on the Vidyavihar Campus.
2. It covers a total area of 10732 Sq. ft. with 84,445 textBooks and 67,635 Reference Books, 825 Back Volumes, 8 Braille Collections, 124 Journals, 136 Maps, 165 Computers (Internet), 1743 CD and Video, 31 Audio Cassettes, 17 Newspapers, 427 Rere collections, 6000+E-Journals and 135000+ E-Books, from N-List etc.
3. Student-friendly staff provides various facilities and conducts numerous programs for the students such as orientation to newly admitted students, book exhibitions, scholar card, and inter-library loan facility to all the colleges in campus, Book Review competition, special Reference Section for Career Guidance and question papers of previous years and syllabi are also available.
4. Internet access for the students is provided free of cost.
5. Separate seating arrangements are made for girl and boy students.

Library Routine Working Hours:

Monday to Saturday: 7.00 am to 6.00 pm (Closed on Sundays and Public Holidays) (Note: College reserves the right to change the college library timings)

Details of specialized services provided by the library.

- Inter- library loan facility within the Somaiya campus
- Reference Service for research projects.
- Free internet access for students and staff.
- Reprographic Services.
- Scholar cards facilities for TYB.Com / TYBA student who got above 55% in SYBCOM/SYBA.
- Overnight book issues facility.
- Book Bank facility for economically backward students.
- Integrated searching of all resources available in the campus on OPAC and also on web base OPAC.
- Link provided to Online subscribed journals. EBSCOHOST Discovery Services.
- User Orientation is given.
- Assistance in searching Databases is provided.

We are happy to introduce the following new facilities for all Students through Web OPAC. Web OPAC Links <http://114.143.198.3/opac>

Click MY ACCOUNT option to Login.

Login and password are your SVV Net ID OR Go to www.somaiya.edu website-> click on libraries menu in Academics ->click on Somaiya Vidyavihar online Library Search

PLEASE CONTACT THE LIBRARIAN FOR THE USERNAME AND THE PASSWORD.

Home issue of books:

- Two books will be issued on College ID card for undergraduate students and 4 books for post graduate students.
- If the books are not returned on the due date, a fine of Rs. 2/- per day will be charged (including holidays and Sundays)
- In case any book is lost or damaged by the student, he/she is required to replace the books. If the book is not available in the market, he/she has to pay the cost of the book.
- If the student does not pay the library fine. The privilege of borrowing the books may be suspended.
- Reference books, expensive and rare books, journals, bound volume; magazines are not issued for Home issue. They are available in the library only for reading purposes and should be issued against their identity cards.
- Overnight Book: Certain books are issued after 1 pm. For senior college and 4 pm. For junior college against the identity card only for a night which should be returned next day morning.
- Textbooks will be issued immediately. The students fill the demand slip for the reference books.

Self-renewal of home issue books:

- Students can renew books themselves through Web OPAC, provided the book is not in demand/reserved before due date.
- Every student can login into the OPAC through the integrated ID SVV Net which is already sent on your mobile and also on your email.
- Undergraduate students can renew the book only once while postgraduate students can renew it twice,

Book reservation facility:

- Students can only reserve the books through Web OPAC which are not available in the library (issued to other members).
- Search the required book, if not available click the 'Reserve' button.
- The system will notify the students through email, to return the book on or before due date as it is reserved by some other student.
- Once the reserved book is back into the library system will send notification through an email to the students who reserve the book.
- Book will be kept reserved for one day.
- Books which are reserved by student cannot be renewed by self-renewal system. Tools in the library to provide access to the collection.
- OPAC is available in the library for students and staff members and web base OPAC is also available or URL: <http://114.143.198.3/opac>

Electronic Resources:

- Integrated E resources and Databases named as EBSCOHOST Discovery Services are also available on Somaiya Website which include 4000 +databases and 60000 +e-books.

Information on BOOKWORM

The library is using an In- House software “BOOKWORM”. It is integrated software used in all college of the Somaiya campus. Facilities are provided by BOOKWORM for students and staffs are as follows:

- Integrated searching of all resources is available on OPAC for students and staff members.
- Web base OPAC is also available on URL: <http://114.143.198.3/opac> and on www.somaiya.edu

Link provided for self-renewal through the integrated ID SVV Net is sent on the students’ mobile and also on their email ID.

Discipline:

- Students should maintain silence in the library. Students are required to use their own identity card only in order to use the library facility.
- Students should switch off their mobile phones before entering the library. Fine: Rs.100/-.
- The books should be handled carefully and any kind of tampering/damaging of books is highly punishable. No eatables are allowed in the library. Fine: Rs.50/-.

Students' Support-Activities

Gymkhana: 'Develop a Champion in You'



- 1) Gymkhana with indoor games facilities.
- 2) Two large playgrounds for outdoor games such as Cricket, Football, Basketball Court, Squash, Lawn Tennis and Volleyball court. International Athletics Track with all the modern facilities.
- 3) Till date, students have won various state and national tournaments and brought name and fame to the college.

Extra-curricular Activities



The aim of these activities is to enable students keeping abreast of current affairs and to help them to develop critical thinking on all contemporary issues whether—economic, social, psychological, moral or political. We have Thirteen Associations for this purpose. Through participation in the activities of these associations students discover avenues for learning and building self-confidence

- **Association for Environmental Awareness**

It makes students aware about initiatives to be taken as a solution for Environmental problems. Programs like rainwater harvesting demonstration, tree plantation & guest lecturers related to environmental issues were organized.

- **Association of Political Science**

The association aims to enrich students by supporting their academic merit via innovative activities related to Political Science, such as connecting them to empirical reality and translating those realities of politics to theories in number of ways.

- **Accountancy Association**

The accountancy association aims to enhance the students' capabilities & competitive skills & employability & acceptability in the industry.

- **Commerce Association**

The commerce association aims to enhance the students' capabilities and personality to further their career avenues in Commerce.

- **Economics Association**

The economics association aims at developing insight involving the complex nature of problems in the discipline of Economics and makes students aware of current problems of domestic and international economy and make them more skill oriented.

- **English Athenaeum**

'English Athenaeum' came into being with a view to initiate undergraduate students of all the faculties of our college into the realm of Creative Writing by exposing them to the existing treasure trove of English Literature penned by people of different nationalities. The intention has been to make the students recognize critical appreciation of literary content, expression and lofty traditional contribution to the field.

- **Gujarati Sahitya Mandal**

Gujarati Sahitya Mandal gives students an opportunity to bring-out their hidden potentials, talents and creativity and attempts to make them understand the importance of Gujarati, their mother-tongue. It also aims to promote Gujarati culture, literature and encourage Gujarati and non-Gujarati students to participate in various programs. As a part of social responsibility, the Mandal undertakes number of community welfare and betterment activities.

- **History Association**

The History Association motivates students to develop love for heritage, tradition and Archaeology, which are core to the subject of History.

- **Hindi Parisabha**

Hindi Parisabha aims to create interest in Hindi Literature and strives to sensitize students to the rich legacy of our traditional values and ethos manifested in literature vis-a-vis the present trend of extreme professionalism.

- **Marathi Prabodhan**

Marathi Prabodhan gives scope to flourish different skills within students and helps to develop their overall personality.

- **Sanskrit Sabha**

Sanskrit Sabha attempts to simplify the study of Sanskrit to students through various activities and promotes inculcation of values and knowledge, abundantly available in the Sanskrit language.

- **Sociology Association**

Sociology Association through its Social Health Education Committee exposes you to various social and health issues through guest lectures and various competitions. The department also provides experiential learning through social surveys, workshops and

● **Drushti Film Forum**

Drushti Film Forum provides a platform to watch keenly, discuss and appreciate films across the globe. Recently *Drushti* Film Forum organized campus level *Drushti* film festival with internationally acclaimed films.

Every student must necessarily enroll and participate in at least 3 of the associations mentioned above.

Co-Curricular Activities:

A) National Service Scheme (N. S. S.)



N.S.S. Unit of our college attempts to imbibe noble this value among volunteers. Projects on Literacy, Cleanliness, Health Awareness, AIDS awareness, Career Options, Problems of the Girl Child & Women Security, Save Energy, Notebook making, Tree Plantation, Dam Construction, Disaster Management, Voter Awareness, Blood Donation, environment enrichment etc. have enabled our students to experience the problems of our society and community. Our aim is the overall development of students' personality through services to society. The unit organizes 7 days residential camp for the student. Successful volunteers are awarded additional marks and certificates as per university norms. On 13th April 2022, our college NSS unit was felicitated by Vice Chancellor of University of Mumbai, Dr. Suhas Pednekar Sir for Blood Donations Drives conducted during covid pandemic period.

B) National Cadet Corps. (N. C. C.)



A healthy patriotic fervor fueled by unquestioned discipline and stamina, is what this institution strives to inculcate in its N. C. C. cadets. Most of our cadets have stood up to the motto and their excellent performance has resulted in their inclusion in many student-oriented programs conducted by the Army, the Police, and other social organizations. Some of our students have participated in the Republic Day Parade held in New Delhi and also in Mountaineering and Rock-Climbing activities. In March 2022, .22 Rifle Simulator was inaugurated at the hands of Lt. Gen Jagbir Singh (Retd.) Secretary, Somaiya Vidyavihar and Brigadier G S Madhwal, Group Commander, Mumbai NCC ' A ' Group

C) Cultural Forum



Cultural Forum of our college acts as a platform for our students to showcase their talent and helps in setting their career. It gives them opportunity to think 'out of box'. It helps in nourishing and nurturing innovative ideas of students. Many of the student participants have used this platform for setting up their career. In the journey, sister Meera Paranjape of TYBA secured Second rank in the Final round of Youth festival 2022 (Mono Acting) and sister Juhi Rajesh of FYBA secured Third rank in Mehandi competition of Youth festival 2022's final round. College has also won numerous awards at various inter-collegiate events.

D) Entrepreneurship Development Cell (EDC)



The objective of the Cell is as follows:

- To enhance the entrepreneurial skills of the students and also to support the Prime Minister's Skill Development Program for promoting self - employment.
- To throw insight into the various facilities and schemes available with the government for developing entrepreneurs.
- To generate employment opportunities through entrepreneurial activities
- To promote economic development of the country through self - employment.
- To promote 'Make in India' and 'Made in India'

E) Department of Life Long Learning and Extension (DLLE)



DLLE was introduced in our college for the first time in the academic year 2019-2020. The motto of DLLE is **"Reach to Unreached"**. It gives the students an opportunity participates in extension work activities and develops new skills. The extension work projects offered in our college are Annapoorna Yojana (APY), Career Project (CP) and Industry Orientation Project (IOP). A total of 75 students have enrolled for DLLE.

F) Career Katta

Career Katta is initiated jointly by the Maharashtra Information Technology Support Centre (MITSC) and Maharashtra State Higher and Technical Department. Its motto is to provide value-added skilled human resources. To develop entrepreneurial skills among the youth it has started 'Udyojak Aaplya Bhetila', and to make the burocrates and Officers it has started 'IAS Aaplya Bhetila'. Only 365/- charge for three years. The tremendous video lecture provides freely through its YouTube channel.

Under the initiative of Career Katta different activities are conducted on regular basis as follows:

1. आय. ए. एस आपल्या भेटिला - Everyday one lecture is conducted for students preparing for civil services from 5 pm to 7 pm. The benefit of this lecture series can be availed at Rs. 365/- p.a.
2. उद्योजक आपल्या भेटिला - Everyday one lecture is conducted by an entrepreneur, sharing his ideas of succeeding in a business or venture. The benefit of this lecture series can be availed at Rs. 365/- p.a.

G) Students' Support Programs:

- Computer Laboratory
- Students' Council
- Gold and Silver medals for Best Boy and Best Girl students at Jr. and Sr. College levels
- Book Bank scheme/Book Loan scheme
- Group Insurance for students
- Special Remedial Coaching for Underprivileged Classes Society Students
- Special Guidance Lectures by Eminent Subject Experts or Guests

H) Welfare Measures

- Counselling Cell
- Women's Development Cell
- Placement Cell
- Career Counselling Cell
- Grievances Cell
- Social Health Cell
- First Aid and Medical Assistance
- Advisory Cell for Reserve Category
- Tuition Waiver for Students Opting for 6 Papers at TYBA in Gujarati Language
- Scholarship for Students Opting for 6 Papers at TYBA in subject Sanskrit Language.
- Special Student Scholarship for Economically Backward/Needy Students
- Staff Scholarship

I) Unique Features

- Our College is the Parent institution of Somaiya Vidyavihar.
- Well-equipped Library with Computer and Internet facilities.
- Parents' Meeting is arranged in the month of December every year.
- Emphasis on Value Education through teaching of Gita / Ethics.
- Remedial classes for SC and other weaker students.

J) CENTRE FOR GANDHIAN STUDIES



Centre for Gandhian Studies was established in 2006 under the scheme of epoch-making social thinkers. It was inaugurated at the hands of the noted historian—Shri Y. D. Phadke.

Vision: Centre for Gandhian Studies is dedicated to awakening and dissemination of Gandhian thoughts, literature and ideals. The center organizes Gandhi Pariksha, Seminars, Field Visits, Inter-collegiate competitions and has a well-equipped library. It produces student wallpaper titled ‘Shanti’.

ELIGIBILITY FOR ADMISSION TO THE THREE-YEAR DEGREE COURSE
Three Year Bachelor of Arts (B. A.) / Bachelor of Commerce (B. COM.)
Degree Course

Admission to F. Y. B. A. /B. Com:

- A candidate to be eligible for admission to the three-year integrated course leading to the Degree of Bachelor of Arts / Commerce, must have passed the Higher Secondary School Certificate (S.Y.J.C.) Examination conducted by the Maharashtra State Board of Secondary and Higher Secondary Education, Mumbai, or an examination recognized as equivalent with subjects, as may be specified by the university in Arts, Science or Commerce streams.
- Students passing examination equivalent to S.Y.J.C. of the Higher Secondary Board, Mumbai, Intermediate (Arts / Science / Commerce) from other states and immigrating from other universities / boards seeking admission to the F.Y. of the Three-year integrated degree course will be admitted only on production of a "Provisional Eligibility Certificate" issued by the University of Mumbai. Such students shall also submit a Migration Certificate, Statement of Marks and Passing Certificate in original along with true copies within two months from the date of admission, failing which their admission is liable to be cancelled.

Admission to S. Y. B. A. / B.Com.:

A candidate, to be eligible for admission to the above course commencing from June 2002 and thereafter must have either:

- passed the F.Y.B.A./B.COM., or
- failed in not more than two heads of passing at the F.Y. level.

Admission to T. Y. B. A. / B. Com.

To be eligible for admission to the T.Y.B.A./B. Com Course commencing from June 2002 and thereafter a candidate must have either:

- Passed the F.Y.B.A./B.Com.
- Passed the F.Y. & S.Y. B.A./B.Com. but failed in S.Y.B.A/B.Com. in not more than TWO subjects
OR
- Passed the S.Y.B.A./B.Com. but failed the F.Y.B.A./B.Com. in not more than TWO subjects. Where the student has not cleared either F.Y.B.A./B.Com. or S.Y.B.A./B.Com. Class but taken admission in T.Y.B.A./B.Com. Class and appeared for T.Y.B.A./B.Com. examination held by the university, the results will not be declared unless he/she passes in the subject failed in F.Y. or S.Y.B.A./B.Com. examination.

Students coming from other colleges affiliated to the University of Mumbai will be admitted only provisionally on production of a **No Objection Certificate** from the principal of the college last attended and that admission will be confirmed only on receipt of the Transference Certificate (T.C.) from their previous college.

The distribution of papers during the three-year period of the degree course will be as follows:

THREE-YEAR B. A. DEGREE COURSE

| Major Subject (6 Credits): | Minor Subject (2 Credits): | Open Elective (2 Credits) | Vocational Skill Course (VSC) (2 Credits) Skill Enhancement Course (SEC) (2 Credits) | Value Education Course (VEC) - (2 Credits) | Ability Enhancement Course/AEC (2 Credits) | Indian Knowledge System/ IKS (2 Credits) |
|---|---|--|--|---|---|--|
| Any ONE from the following: | ONE subject | Any TWO from the following list: | VSC discipline specific SEC : Select any ONE from the following list | | | |
| English Economics Gujarati History Hindi Political – Science Philosophy Marathi Psychology Sanskrit Sociology | (Please Refer Major-Minor Combination on last page) | Semester I: 1.Me & My Surrounding-I 2. Introduction to Book Keeping 3. Business Management (Essentials of Management)-I Semester II: 1. Me & My Surrounding-II 2. Basic Statistics 3. Advanced Book Keeping 4. Business Management (Essentials of Management)-II | Semester I: 1.Argument mapping skills 2.Cultural History of India-I 3.Phonetics skills in Indian languages-I 4.Print media writing skills (Medium of instruction-Hindi) 5.Compering skills (Medium of instruction-Marathi) 6. Writing skills (Medium of instruction-Gujarati) 7. Basics of Stock Market Operations 8.Preparation for competitive examination studies 9.Pronunciation skills in English 10.Basics of Personal Income Tax 11.Legal drafting, pleading & convincing Semester II: 1.Cultural History of India-II 2.Reasoning Skills 3.Basics of Share Market Operations-I 4.Presentation Skills (Medium of instruction English) 5.Preparation for competitive examination interview 6.Writing for social media (Medium of instruction Marathi) 7.Electronic Media writing skills 8.Compliance of Personal Income Tax 9. Intellectual Property Rights (IPR) registration skills. 10.Energy Auditing Skills 11. Proof reading skills 12. Phonetics skills in Indian languages-II | Semester-I Responsible Eco-citizens Semester-II Responsible Eco-citizens | Semester-I Basic Communication Skills in English Or Advance Communication Skills in English Semester-II Basic Communication Skills in English Or Advance Communication Skills in English | Generic IKS |

COURSES OFFERED under NEP 2020: F.Y.B.A. PROGRAMME

SECOND YEAR B. A. (EIGHT PAPERS): AS PER OLD STRUCTURE

| Semester Three: | | Semester Four: | |
|--|--|--|--|
| Compulsory Paper | | Compulsory Paper | |
| Foundation Course Paper II | | Foundation Course Paper III | |
| | | | |
| Any one of the following Applied Component Papers: | | | |
| Applied Components | | Applied Components | |
| Mass Communication | | Mass Communication | |
| Bookkeeping | | Bookkeeping | |
| Journalism | | Journalism | |
| Six papers of major / Optional subjects. (Two papers in each of the three Optional / Major subjects studied at the First Year B.A.) | | | |
| Optional Papers (Two paper Languages) | | Optional Papers (Two paper Languages) | |
| English III, V | | English IV, VI | |
| Hindi II, III | | Hindi II, III | |
| Marathi II, III | | Marathi II, III | |
| Gujarati II, III | | Gujarati II, III | |
| Sanskrit II, III | | Sanskrit II, III | |
| Optional Papers (Social Sciences) | | Optional Papers (Social Sciences) | |
| Economics II, III | | Economics II, III | |
| Political Science II, III | | Political Science II, III | |
| Sociology II, III | | Sociology II, III | |
| Philosophy II, III | | Philosophy II, III | |
| Psychology II, III | | Psychology II, III | |
| History II, III | | History II, III | |

THIRD YEAR B. A. (SIX PAPERS)

Six Papers in any one of the following subjects offered at the first and second year:

English - Semester V and VI

| Sr. No. | Name of the Paper |
|---------|----------------------------|
| 01 | Literary Era I and II |
| 02 | Literary Criticism |
| 03 | Grammar and Art of Writing |
| 04 | Literary Era III and IV |
| 05 | Literary Era V and VI |
| 06 | Drama and Theatre |

Sanskrit – Semester V and VI

| Sr. No. | Name of the Paper |
|---------|--|
| 01 | Philosophical Literature |
| 02 | History of Vedic & Classical Sanskrit Literature |
| 03 | Ancient Indian Statecraft |
| 04 | Vedic Literature |
| 05 | Grammar and Language Skills |
| 06 | Scientific Literature & Modern Sanskrit Literature |

Marathi –Semester V and VI

| Sr. No. | Name of the Paper |
|---------|---|
| 01 | History of Medieval Marathi Literature |
| 02 | Indian Literary and Western Literary Theory |
| 03 | Literature and Society |
| 04 | Linguistics and Marathi Grammar |
| 05 | Study of An Author |
| 06 | Occupational Marathi : Translation and Creative Writing |

Gujarati – Semester V and VI

| Sr. No. | Name of the Paper |
|---------|---|
| 01 | Theory of Literary Criticism |
| 02 | History of Modern Gujarati Literature |
| 03 | Applied Nature Related to Core Subject |
| 04 | Phi logy, Linguistics, Grammar & Prosody |
| 05 | History of Literature (From Medieval Period to Modern (Age) |
| 06 | Close Reading of the Texts |

Hindi – Semester V and VI

| Sr. No. | Name of the Paper |
|---------|---|
| 01 | History of Hindi Literature |
| 02 | Post Independent Hindi Literature |
| 03 | Functional Hindi |
| 04 | Literary Criticism Rhetoric & Prosody |
| 05 | Linguistics, Hindi Language and Hindi Grammar |
| 06 | Mass Media |

Economics

| Sr. No. | Name of the Paper |
|---------|--|
| 01 | Advanced Economic Theory |
| 02 | Growth and Development |
| 03 | Indian Financial System |
| 04 | Elementary Mathematical and Statistics for Economic Analysis |
| 05 | Introduction to Econometrics |
| 06 | Indian Economic Thought |
| 07 | Political Economy of Globalization |

History – Semester V and VI

| Sr. No. | Name of the Paper |
|---------|--|
| 01 | History of Medieval India (1000 A.D. – 1526 A.D.) |
| 02 | Archeology and Historical Tourism |
| 03 | Information and Communication |
| 04 | History of the Marathas – Royal Period (1630 A.D. – 1707 A.D.) |
| 05 | History of Contemporary World (1945 A.D. – 2000 A.D.) |
| 06 | Research Methodology in Social Sciences |
| 07 | History of Medieval India (1526 A.D.- 1707 A.D.) |
| 08 | Museology, Archival and Library Science |
| 09 | Mass Media |
| 10 | History of the Marathas – Peshawa Period (1707 A.D. – 1818 A.D.) |
| 11 | History of Asia (1945 A.D. – 2000 A.D.) |
| 12 | Research Techniques in History |

Sociology – Semester V and VI

| Sr. No. | Name of the Paper |
|---------|---|
| 01 | Social Theory |
| 02 | Sociology of Work |
| 03 | Sociology of Gender |
| 04 | Urban Sociology or Environment and Society |
| 05 | Sociology of Human Resource Development |
| 06 | Quantitative Social Research |
| 07 | Theoretical Anthropology |
| 08 | Sociology of Informal Sector |
| 09 | Gender and Society in India: Emerging Issues |
| 10 | Urbanization in India : Issues and Concerns or Environmental Concern in India |
| 11 | Sociology of Organization |
| 12 | Qualitative Social Research |

Political Science

| Sr. No. | Name of the Paper |
|---------|---|
| 01 | Political Process in Modern Maharashtra |
| 02 | Political Thought |
| 03 | International Relation |
| 04 | Political Sociology |
| 05 | American Political System |
| 06 | Electoral Politics in India |

Psychology – Semester V and VI

| Sr. No. | Name of the Paper |
|---------|--|
| 01 | Psychological Testing & Statistics |
| 02 | Abnormal Psychology |
| 03 | Industrial & Organizational Psychology |
| 04 | Cognitive Psychology |
| 05 | Practical in Cognitive Processes & Psychological Testing |
| 06 | Counseling Psychology |

Philosophy – Semester V and VI

| Sr. No. | Name of the Paper |
|---------|--|
| 01 | Indian and Western Philosophy (Advanced) |
| 02 | Philosophy of Religion |
| 03 | Living Ethical Issues |



OR

Three papers each in any two of the *Optional/Major* subjects offered at the First Year and the Second Year provided the choice does not clash with the time-table.

The syllabus of the above papers is available in the library for reference. Students are requested to go through the syllabi before selecting their subjects.

N. B.: No language/subject will be permitted if the number of students who have enrolled for a particular language/subject is less than 15/24 at the entry point. In the event of such a contingency, student(s) who have offered that language/subject will have to change over to another one permitted by the college.

INTEGRATED B. COM. DEGREE COURSE
First Year B. Com: As per National Education Policy (NEP)

| SEM I | | |
|---|-----------------------|----------------------------|
| Course Name | No. of Credits | Category |
| Introduction to Business | 3 | Major/Core |
| Financial Accounting I | 3 | Major/Core |
| Business Mathematics I | 2 | Vocational Skill Course-1 |
| Business Statistics I | 2 | Vocational Skill Course-2 |
| English for Business Communication I | 2 | Ability Enhancement Course |
| Responsible Eco Citizens I | 2 | Value Education Course |
| Generic IKS | 2 | Indian Knowledge System |
| Sports/NSS/NCC/Cultural Activities etc. | 2 | Co-Curricular |
| Select Any TWO of the following Open Electives (Total Credits 2+2) | | |
| MARATHI For All –I (Selected Marathi Prose & Functional Marathi) | 2 | Open Elective |
| Hindi Stories & Moral Values | 2 | Open Elective |
| History of Contemporary India-I | 2 | Open Elective |
| Gujarati for all : Shikho Gujarati with Stories | 2 | Open Elective |
| Constitutional Studies | 2 | Open Elective |
| Fundamentals of Psychology I | 2 | Open Elective |
| Sociology of Work I | 2 | Open Elective |
| Me and My Surroundings I | 2 | Open Elective |
| Ancient Indian Management Techniques (Panchtantra)-I | 2 | Open Elective |
| Basic foundation of Logic (Deduction) | 2 | Open Elective |
| Content Writing | 2 | Open Elective |
| Total Number of Credits | 22 | |

| SEM II | | |
|---|-----------------------|----------------------------|
| Course Name | No. of Credits | Category |
| Service Sector | 3 | Major/Core |
| Financial Accounting II | 3 | Major/Core |
| Business Mathematics II | 2 | Vocational Skill Course-1 |
| Business Statistics II | 2 | Vocational Skill Course-2 |
| English for Business Communication II | 2 | Ability Enhancement Course |
| Responsible Eco Citizens II | 2 | Value Education Course |
| Business Economics I | 2 | Minor |
| Sports/NSS/NCC/Cultural Activities etc. | 2 | Co-Curricular |
| Select Any TWO of the following Open Electives (Total Credits 2+2) | | |
| MARATHI For All -II (Selected Marathi Poetry and Functional Marathi) | 2 | Open Elective |
| Rastriya Sanskritik Kavya Dhara | 2 | Open Elective |
| History of Contemporary India-II | 2 | Open Elective |
| Gujarati For All: Selected Gujarati Poems | 2 | Open Elective |
| Current Affairs (Constitutional law & parliament proceedings) | 2 | Open Elective |
| Fundamentals of Psychology II | 2 | Open Elective |
| Sociology of Work II | 2 | Open Elective |
| Me and My Surroundings II | 2 | Open Elective |
| Ancient Indian Management Techniques (Panchtantra)-II | 2 | Open Elective |
| Basic foundation of Logic (Induction) | 2 | Open Elective |
| Creative Writing | 2 | Open Elective |
| Total Number of Credits | 22 | |

Second Year B. Com: As per old structure

Semester III:

| Sr. No. | Name of the Paper |
|----------------|---|
| 01. | Commerce Paper- III (Management - Functions and Challenges) |
| 02. | Business Economics (Paper -III) |
| 03. | Accountancy and Financial Management (Paper- III) |
| 04. | Business Law- I |
| 05. | Advertising |
| 06. | Foundation Course; (Paper -II) |

Semester IV:

| Sr. No. | Name of the Paper |
|----------------|---|
| 01. | Commerce Paper -IV- Management Production and Finance |
| 02. | Business Economics (Paper -IV) |
| 03. | Accounting and Financial Management (Paper -IV) |
| 04. | Foundation Course (Paper- II) |
| 05. | Business Law - II |
| 06. | Advertising |

Third Year B. Com: As per old structure

Under the revised pattern brought into force by Mumbai University with effect from the academic year 1994-95, a student has to take a total of seven papers at T.Y.B.Com.

Semester V

| Sr. No. | Name of the Paper |
|---------------------|---|
| 01. | Commerce; Paper -III: Marketing (<i>Compulsory</i>) |
| 02. | Business Economics; Paper V: Indian Economics (<i>Compulsory</i>) |
| 3, 4 & 5 | Special Group; Three Papers Financial Accounting and Auditing Paper V (Financial Accounting) |
| | Financial Accounting and Auditing Paper VI (Cost Accounting) |
| | Financial Accounting and Auditing Paper VII (Auditing) |
| 6. & 7. | Any Two of the following applied component papers: |
| | Computer System and Application/ Direct Taxation |
| | Direct Taxation/ Export Marketing |
| | Direct Taxation/ Psychology of Human Behavior at Work |
| | Computer System and Application / Psychology of Human Behavior at Work |

Semester VI

| Sr. No. | Name of the Paper |
|----------|---|
| 01. | Commerce; Paper- III: Human Resource Management (Compulsory) |
| 02. | Business Economics; Paper VI: Indian Economics (Compulsory) |
| 3, 4 & 5 | Special Group; Three papers: |
| | Financial Accounting and Auditing- VIII (Financial Accounting) |
| | Financial Accounting and Auditing- IX (Cost Accounting) |
| | Financial Accounting and Auditing- X (Auditing) |
| 6. & 7. | Any Two of the following applied components papers: |
| | Computer System / Indirect Taxation |
| | Indirect Taxation/ Export Marketing |
| | Indirect Taxation/ Psychology of Human Behavior at Work |
| | Computer System / Psychology of Human Behavior at Work |

POSTGRADUATE and DOCTORAL STUDIES

- The College is the center for registration and instruction for the M.Com., M.A. (Autonomous) Course.
- Students are registered for Ph.D. in Commerce, Hindi, Gujarati, History and English.

EXAMINATION AND EVALUATION PROCEDURE (Old Structure)

Under the Choice Based Credit System, assessment and evaluation of students for all the programs (both UG and PG) is carried out in two ways: internal evaluation and semester-end evaluation. Evaluation pattern adopted is of 25:75 marking scheme, wherein, out of 100 marks, 25 marks are assigned to internal evaluation and 75 marks are assigned to semester-end evaluation.

Internal evaluation

Different modes of evaluation are adopted to assess students. Depending upon the nature of Course, methods such as class test, assignments, presentations, field visit, workshop, OFFEE (Offline Education and entertainment), project etc. are utilized. A student is evaluated based on her/his performance in the aforesaid task as well as active participation in the class work. Allocation of marks, out of 25, is as per the evaluation scheme approved in Subject board, Academic board and Governing body. A student should secure a minimum of 10 marks out of 25 (which amounts to 40%) in order to pass in internal evaluation.

Semester -end evaluation

At the end of each semester, a written examination of two hours and thirty minutes is conducted in each subject. This Examination is of 75 marks. A student should secure a minimum of 30 marks out of 75 (40%) in order to pass semester end examination.

Information about both internal and semester-end, evaluation is displayed on the notice board in the college.

For rules and regulations regarding Allowed to Keep Term (ATKT), revaluation, examination under medical grounds, Unfair Means etc., please refer the college website.

Degree Distribution

- i. After finalization of the result Exam Cell sends the data to the Mumbai University for printing the Degree Distribution certificates
- ii. The Degree Distribution ceremony is conducted by the college just after the university's Degree Distribution ceremony.

Information Available on Website

- i. Previous Question papers for all three years FY, SY and TY BA and B Com.
- ii. Rules and regulations related to examination and admission.
- iii. Website address: <https://www.somaiya.edu/kjsac/Updates/exam>

Dealing with Copy Cases

- 1) Warnings are displayed on notice boards regarding Use of Unfair practices and the consequent penalty.
- 2) Answer papers of the students found using unfair means are sent to the Unfair means committee for further action.
- 3) Actions are taken according to the reports of the unfair means committee.

Innovative Measures under Autonomy

- 1) Question Papers are sent for Library and Revaluation files
- 2) Question Banks are being prepared by various departments with appropriate training provided by the Management.
- 3) Previous question papers are uploaded on college website.
- 4) Warnings against use of unfair means during examinations are displayed as a preventive measure.

Important Points:

- 1) The students of F.Y.B.Com. / S.Y.B.Com. and T.Y.B.Com. will have to appear for the online examination (offee) on the scheduled dates. For those who could not appear due to medical reasons, may be given one more chance only.
- 2) The students of FY & SY B.A. / B.Com. class who have to appear for examination to be held on medical ground should put in their applications within eight days of the last exam held.
- 3) The students are required to submit their projects on the scheduled dates decided by the respective departments.
- 4) The ATKT students are required to submit their projects within two days of the respective subject examination.

The students are required to go carefully through notices relating to examinations. Other than notices put up, no separate intimation will be provided online or through phone.

**Revised Scheme of Examination Faculty of Arts
(Undergraduate Programs)****Credit Based Evaluation System Scheme of Examination**

The performance of the learners shall be evaluated into two categories. Internal Assessment with 25% marks. Semester End Examinations with 75% marks. The allocation of marks for the Internal Assessment and Semester End Examinations areas shown below:

a) Internal Assessment-25% 25 Marks

| Sr. No. | Particulars | |
|---------|---|----------|
| 1 | One periodical class test/ Project | 20 Marks |
| 2 | Active participation in class an overall conduct as a responsible learner, mannerism and articulation and exhibit of leadership qualities in organizing related academic activities | 05 Marks |

b) Semester End Examinations - 75%75 Marks

- (a) Duration-These examinations shall be of 2.5 Hours duration.
- (b) Theory question paper pattern
- (c) There shall be five questions for 15 marks each.
- (d) All questions shall be compulsory with internal choice within the questions.
- (e) Question may be subdivided into sub-questions a, b, c... and the allocation of marks depends on the weightage of the topic.

Passing Standard

The learners to pass a course shall have to obtain a minimum of 40% marks in aggregate for each course where the course consists of Internal Assessment and Semester End Examination. The learners shall obtain minimum of 40% marks (i.e. 10 out of 25) in the Internal Assessment and 40% marks in Semester End Examination (i.e. 30 Out of 75) separately, to pass the course and minimum of Grade E, wherever applicable, to pass a particular semester. A learner will be said to have passed the course if the learner passes the Internal Assessment and Semester End Examination together.

Faculty of Commerce
(Undergraduate Programs)

Credit Based Evaluation System

Scheme of Examination

The performance of the learners will be evaluated in two Components. One component will be the Internal Assessment component carrying 25% marks and the second component will be the Semester-wise End Examination component carrying 75% marks. The allocation of marks for the Internal Assessment and Semester End Examinations will be as shown below:

a) Internal Assessment-25% **25 Marks**

For Courses without Practical

| Sr. No. | Particulars | Marks |
|---------|---|----------|
| 1 | Online Test, Projects/Assignments | 20 Marks |
| 2 | Active participation in routine class instructional deliveries And overall conduct as a responsible learner, mannerism and articulation and exhibit of leadership qualities in organizing related academic activities | 05 Marks |

For Courses with Practical

| Sr. No. | Particulars | Marks |
|---------|---|----------|
| 1 | Semester End Practical Examination | 20 Marks |
| | Journal | 05 Marks |
| | Viva | 05 Marks |
| | Laboratory Work | 10 Marks |
| 2 | Active participation in routine instructional deliveries Class and overall conduct as a responsible learner, mannerism and articulation and exhibit of leadership qualities in organizing related academic activities | 05 Marks |

b) Semester End Examinations - 75% **75 Marks**

- I. Duration-These examinations shall be of 2.5 Hours duration.
- II. Theory question paper pattern.
- III. There shall be five questions for each of 15 marks.
- IV. All questions shall be compulsory with internal choice within the questions.
- V. Question may be subdivided into sub-questions a, b, c... and the allocation of marks depends on the weightage of the topic.

Passing Standard

The learners to pass a course shall have to obtain a minimum of 40% marks in aggregate for



each course where the course consists of Internal Assessment and Semester End Examination. The learners shall obtain a minimum of 40% marks (i.e. 10 out of 25) in the Internal Assessment and 40% marks in Semester End Examination (i.e. 30 Out of 75) separately, to pass the course and minimum of Grade E to pass a particular semester. A learner will be said to have passed the course if the learner passes the Internal Assessment and Semester End Examination together.

Note: Minor modifications are allowed depending upon the subject.

STANDARD OF PASSING

The learners shall have to obtain a minimum of 40% marks in aggregate to qualify for each course where the course consists of Internal Assessment & Semester End Examination. However, the learners shall obtain a minimum of 40% marks i.e. 10 out of 25 in the Internal Assessment i.e. 30 out of 75 in semester end examination separately.

CONCEPT OF CREDIT SYSTEM

- Involves breaking down the curriculum into measurable units that can be combined to get a degree / diploma.
- A 'credit' is generally a 'value' used to measure students work load in terms of learning time required to complete course units, resulting in learning outcomes.
- Credit is used in higher education to be summarized and describe an amount of learning.
- The number of credits awarded to a learner is determined by Credit Value or Credit Points assigned to a particular course.
- It is a way of expressing the 'learner's workload'. (Student's)
- It affords more flexibility to the learners allowing them to choose inter-disciplinary courses. One (01). Credit is thirty (30) learning hours. Credit once gained cannot be lost.

TERMINOLOGY USED IN CREDIT SYSTEM

- **Program:** A program is a set of courses that are linked together in an academically meaningful way and generally ends with the award of a Certificate or Diploma or Degree depending on the level of knowledge attained and the total duration of study. E.g. Certificate in office Computing, Diploma in Journalism, B. Com, M. Sc. M.S.W. etc. are the 'Programs'.
- **Course:** A course is essentially a constituent of a 'program' and may be conceived of as a composite of several learning topics taken from a certain knowledge domain, at a certain level. A 'course' in simple terms corresponds to the word 'subject' used in many Universities.
- **Module or Unit:** A module or Unit is a part of the course which may be studied in conjunction with other learning modules or studied independently.
- **Credit Points:** This has reference to the 'Workload' of a learner and is an index of the number of learning hours deemed for a certain segment of learning. The course may be assigned anywhere between 4 to 8 credit points wherein 1 credit is equal to 30 learning hours.
- **Credit Completion or Credit Acquisition:** - It may be considered to take place after the learner has successfully cleared all the evaluation criteria with respect to a single course.
- **Credit Bank:** - The process of accumulating Credits over a period of time, leads to the idea of a 'Credit Bank'. Conceptually, a Credit Bank in simple terms refers to stored and dynamically updated information regarding the number of Credits obtained by any given student along with the details regarding the course/s for

which Credit has been given, the course-level, nature, etc.

- **Credit Transfer:** - Credit Transfer means that credits earned at one institution for one or more courses under a given program are accepted under another program either by the same institution or another institution.
- **Performance Transfer:** -When a student who has successfully completed a certain academic program, is allowed to transfer his past performance to another academic program having some common courses, performance transfer is said to have taken place.
- **Course Exemption:** -The student who has already completed one of these academic programs is then allowed to skip these 'equivalent' courses when registering for the new program. He is then 'exempted' from 're-learning' the common or equivalent content area and from re-appearing for the concerned examinations.
- **Block Transfer:** - This refers to a group of courses, such as a completed certificate or diploma program that are accepted for transfer of credit into a degree program.
- **Shelf Life:** - This has a reference to the time duration for which the content of a given course is relevant and is directly linked with the obsolescence of knowledge in a certain field. Some institutions have time limits for granting credit transfer.
- **Transfer Agreement:** - This is an agreement that must be made between two institutions (a sender and a receiver) that specifies how the sending institution's course or program will be accepted (for transfer of credits) at the receiving institution.

* These terminologies will be incorporated in the existing ordinances in due course by placing it before the appropriate authority.

ALLOCATION OF TIME PER CREDIT

The time duration per credit into two parts:

- 1) Approximately fifty percent of the time will be spent on classroom instructions including practical as prescribed by the University.
- 2) Rest of the time spent for assignments, Projects, journal writing, case studies, library work, industrial visits, attending seminars / workshops, preparations for examinations etc. will be considered as notional hours.

PHILOSOPHY OF CREDIT ASSESSMENT

Generally, there are four different types of courses in all the programs conducted at University of Mumbai.

| | | |
|------------------------|---|----------------------|
| Compulsory Courses | = | 4 credits per course |
| Core / Special Courses | = | 3 credits per course |
| Applied Components | = | 3 credits per course |
| Foundation Courses | = | 2 credits per course |
| Skill Courses | = | 2 credits per course |

The total credit value shall be 120 credits for all UG programs across the faculties.

The total credit value shall be 80 credits for PG programs under the faculty of Arts & Commerce and 96 credits in case of faculty of science.

INTRODUCTION TO EXAMINATION AND EVALUATION

(Under National Education Policy)

- Three years integrated program spread across 6 semesters with 60:40 marking scheme and four years honors degree
- Student evaluation will be in two forms for every subject
- Student will be evaluated according to the in semester evaluation (40%) and semester end evaluation (60 %) examinations.
- For core subject (with 3 credits) the duration of semester end examination is 90 minutes of 45 marks and for other subjects (with 2 credits) the duration of semester end examination is 1 hour with 30 marks.
- **In semester (internal) evaluation** will be conducted by respective subject departments. Instructions regarding internal evaluation will be communicated to the students by the respective subject teacher. Assessment can be in the form of test, assignment, presentation etc. In case any student is unable to attend the first internal test, students should approach the respective subject teacher. Students should ensure that the signature with date appears against their roll number.
- **External evaluation** will be conducted as semester end examination. Only one additional chance will be given to the students on medical grounds or representing college for NCC / NSS / cultural / sports activities.
- In both evaluations, delayed submission will be treated as absent, and absence will be declared as fail in that specific subject.

Criteria of passing:

- Student should score 40% marks in each course.
- He/she should score 40% (12 marks out of 30) marks in internal and (18 marks out of 45) in semester end evaluations separately to be declared as pass in 3 credit course.
- He/she should score 40% (08 marks out of 20) marks in internal and (12 marks out of 30) in semester end evaluations separately to be declared as pass in 2 credit course.
- While seeking admission in **second year** -
if a student has more than 2 kt's in either first or second semester he/she will not be permitted in the second year.
- While seeking admission in **third year** -
either first year or second year should be clear.
- **Kt in internal and kt in semester end have equal importance.**

In case a student is unable to attend external examination due to medical reason, then he/she should submit the application seeking permission to appear for the external exam



under medical ground to exam cell on same day through mail
kjsomaiya_artscomm@rediffmail.com

If the student is unable to submit an application, then parent should submit the application with original authentic medical certificate.

WRITER

If a student is specially abled and is not able to write the paper, then necessary documents authenticated by medical officers from government hospital, should be submitted along with the application letter.

Submission of documents and application should be done well in advance in the exam cell.

Group Insurance Scheme for Students

A student taking admission in a college is insured under the Group Insurance Scheme for Students. A student in an Aided course has sum insured amount of Rs. Fifty thousand (scheme A) and in Unaided course the amount is Rs. One lakh (scheme B).

1. 100% coverage in case of sad demise of the insured.
2. 100% coverage for permanent disability (Disability means loss of limbs, loss of eye-sight or sense of hearing or paralysis)
3. 100% coverage for hospitalization expenses arising out of accidents which included cost of medicines as well as expenses for doctor's fees.

Procedure

- The insurance companies should be intimated within seven days in case of any type of accident.
- At the University level the same will be Co-ordinated by the Head of the Department / Registrar.
- Students should preserve the copy of fee payment receipt issued by the College/Department/Institute.
- Claims will be considered even if a student meets with an accident anywhere in India or abroad.

Railway Concession

How to apply online for availing Railway Concession:

1. Somaiya Email Id and Password: This will be generated at the time of admission of the student after the payment of fees. It helps to get all the information, updates of college and campus.
2. SVV Net ID: This is used to apply for online railway concession. The SVV Net ID is actually the first part of the email id.

Ex. If Somaiya Email-ID SVV Net ID: harshada.sk

Password details for SVV net ID:

First Log on to the link given below:

<http://114.143.198./svva/>

Put SVV net Id and Click on forgot password.

A message will be sent to your Mobile no. given by you at the time of admission.

Please note: Same procedure needs to follow whenever you want to reset the password.

Anti-Ragging Act:

As per the circular from Joint Director, Higher Education, Maharashtra Government (**Ref. 2005/ 238/05**), **vishi-1**, dated 28th July 2007) directions, the student found guilty of Ragging already, will not be given admission in college or if found guilty of Ragging even after admission in college will be removed/debarred from the college.

Eligibility Certificate Ordinance:

O. 1: - A student from another university or board of Secondary or Intermediate education or any other Statutory examining body seeking admission to the university shall apply to the Registrar for a Statement of Eligibility and, except in the case of students from the universities in the State of Maharashtra, shall be required to pay fee of Rs. 200/- only and for out of Maharashtra State pay a fee of Rs. 300/- (Fee for foreign Nationals is Rs.730/-). The Registrar may issue a Provisional Statement of Eligibility if he is satisfied that the applicant is prima facie eligible for admission to this university. On production of such a provisional statement of eligibility, a student may seek provisional admission to this university at his own risk and on condition that he submits to the Registrar's office through the Head/Principal of his institution/college, the necessary certificates in original together with a typed copy of each for confirmation of his eligibility before the close of the academic term in which the student is provisionally admitted to the university.

No student from another university shall be admitted to any institute maintained by or affiliated to the university except on production of a Provisional Statement of Eligibility issued by the registrar.

Provisional Statement of Eligibility Fee Structure

| | |
|---|-------------------------------|
| Students those who are migrating from University in the state of Maharashtra | Rs-220/- (Including form fee) |
| The Universities outside Maharashtra State. Maharashtra State Board of Technical Education (M.S.B.TE.) and all Board other than Maharashtra State Board of Higher Secondary | Rs-320/- (including form fee) |
| Foreign Nationals | Rs-750/- (including form fee) |

Documents Required

For UG Students:

- 10th and 12th original Mark Sheet with Xerox copy.
- 10th and 12th original Passing Certificate with Xerox copy
- Original Migration Certificate and Transfer Certificate (U.P. Board students Require T.C. signed by ZP)

For PG Students:

- 12th Original Mark sheet with Xerox copy.
- 12th Original Passing Certificate with Xerox copy.
- F.Y./S.Y./T.Y. (All Semesters) Mark sheets with Xerox copy. Original Migration Certificate and Transfer Certificate. (U.P. Board Student Require T.C. signed by Z.P.)

For Ph.D. Students:

- F.Y./S.Y./T.Y. (All Semesters) Mark Sheets with Xerox copy PET Exam Result. Topic Approval Letter and Interview Letter.

K. J. SOMAIYA COLLEGE OF ARTS AND COMMERCE (AUTONOMOUS)
COURSE :- BACHELOR OF ARTS (FYBA, SYBA, TYBA & TYBA (PSYCHOLOGY))

| PARTICULARS | FY (2023-24) NEP | | SY 2023-24 | | TY 2023-24 | | TY (PSYCHOLOGY) 2023-24 | |
|---|------------------|---------------|---------------|--------------|---------------|--------------|-------------------------|---------------|
| | OPEN | RESERVE | OPEN | RESERVE | OPEN | RESERVE | OPEN | RESERVE |
| Fees Income | | | | | | | | |
| Tuition Fees | 800 | - | 800 | - | 800 | - | 800 | - |
| Library Fees | 425 | - | 625 | - | 625 | - | 625 | - |
| Gymkhana Fees | 400 | - | 400 | - | 400 | - | 400 | - |
| Other Fees / Extra Curricular Activity | 250 | - | 350 | - | 300 | - | 300 | - |
| Exam Fees | 1,890 | 1,890 | 1,890 | 1,890 | 1,890 | 1,890 | 1,890 | 1,890 |
| Enrollment Fees | 220 | - | - | - | - | - | - | - |
| Admission Processing Fee | 200 | 200 | 200 | 200 | 200 | 200 | 200 | 200 |
| Utility Fees | 250 | - | 250 | - | 250 | - | 250 | - |
| Magazine | 100 | - | 100 | - | 100 | - | 100 | - |
| I Card | 250 | 250 | 250 | 250 | 250 | 250 | 250 | 250 |
| Group Insurance | 20 | 20 | 20 | 20 | 20 | 20 | 20 | 20 |
| Student Welfare Fund | 50 | 50 | 50 | 50 | 50 | 50 | 50 | 50 |
| Development Fees | 750 | - | 600 | - | 650 | - | 650 | - |
| Vice Chancellors' Fund | 20 | 20 | 20 | 20 | 20 | 20 | 20 | 20 |
| Disaster Relief Fund | 10 | 10 | 10 | 10 | 10 | 10 | 10 | 10 |
| Alumini Association Fees | 25 | 25 | 25 | 25 | 25 | 25 | 25 | 25 |
| Uni Sports & Cultural Activity | 30 | - | 30 | - | 30 | - | 30 | - |
| E - Suvidha | 50 | 50 | 50 | 50 | 50 | 50 | 50 | 50 |
| E - Charges | 20 | - | 20 | - | 20 | - | 20 | - |
| NSS | 10 | 10 | 10 | 10 | 10 | 10 | 10 | 10 |
| Internal Exam Fees | 100 | 100 | 100 | 100 | 100 | 100 | 100 | 100 |
| Project Fees | 1,800 | - | 2,000 | - | 2,000 | - | 2,000 | - |
| Marksheet Fees | 250 | 250 | 250 | 250 | 250 | 250 | 250 | 250 |
| Housekeeping & Maintenance & Security | 2,000 | 2,000 | 2,000 | 2,000 | 2,000 | 2,000 | 2,000 | 2,000 |
| Value Education | 500 | 500 | 500 | 500 | 500 | 500 | 500 | 500 |
| Activity Fee | 1,500 | 1,500 | 1,500 | 1,500 | 1,500 | 1,500 | 1,500 | 1,500 |
| Sports Fee | 500 | 500 | 500 | 500 | 500 | 500 | 500 | 500 |
| Convocation Fee | - | - | - | - | 250 | 250 | 250 | 250 |
| Computer Practicals | - | - | - | - | - | - | 750 | 750 |
| Laboratory Fees | - | - | - | - | - | - | 1,000 | 1,000 |
| Psychology Project Fee | - | - | - | - | - | - | 650 | 650 |
| Workshop / Seminar / Training Fees | 1,200 | 1,200 | - | - | - | - | - | - |
| Data Storage & Management Fees | 900 | 900 | - | - | - | - | - | - |
| Technical Aid & ICT Fees | 900 | 900 | - | - | - | - | - | - |
| Total Fees Income (A) | 15,420 | 10,375 | 12,550 | 7,375 | 12,800 | 7,625 | 15,200 | 10,025 |
| Refundable Deposits | | | | | | | | |
| Caution Money | 150 | - | - | - | - | - | - | - |
| Library Deposit | 250 | - | - | - | - | - | - | - |
| Laboratory Deposit | - | - | - | - | - | - | 400 | - |
| Refundable (B) | 400 | - | - | - | - | - | 400 | - |
| Total Fees Income + Refundable (A+B) | 15,820 | 10,375 | 12,550 | 7,375 | 12,800 | 7,625 | 15,600 | 10,025 |

COURSE :- BACHELOR OF COMMERCE (FYBCOM, SYBCOM, TYBCOM & TYBCOM (COMPUTER))

| PARTICULARS | FY (2023-24) NEP | | SY 2023-24 | | TY 2023-24 | | TY (COMPUTER) 2023-24 | |
|---|------------------|---------------|---------------|--------------|---------------|--------------|-----------------------|--------------|
| | OPEN | RESERVE | OPEN | RESERVE | OPEN | RESERVE | OPEN | RESERVE |
| Fees Income | | | | | | | | |
| Tuition Fees | 800 | - | 800 | - | 800 | - | 800 | - |
| Library Fees | 500 | - | 900 | - | 900 | - | 900 | - |
| Gymkhana Fees | 400 | - | 400 | - | 400 | - | 400 | - |
| Other Fees / Extra Curricular Activity | 250 | - | 300 | - | 300 | - | 300 | - |
| Exam Fees | 1,890 | 1,890 | 1,890 | 1,890 | 1,890 | 1,890 | 1,890 | 1,890 |
| Enrollment Fees | 220 | - | - | - | - | - | - | - |
| Admission Processing Fee | 400 | 400 | 400 | 400 | 400 | 400 | 400 | 400 |
| Utility Fees | 500 | - | 500 | - | 500 | - | 500 | - |
| Magazine | 100 | - | 100 | - | 100 | - | 100 | - |
| I Card | 250 | 250 | 250 | 250 | 250 | 250 | 250 | 250 |
| Group Insurance | 20 | 20 | 20 | 20 | 20 | 20 | 20 | 20 |
| Student Welfare Fund | 50 | 50 | 50 | 50 | 50 | 50 | 50 | 50 |
| Development Fees | 750 | - | 650 | - | 650 | - | 650 | - |
| Vice Chancellors' Fund | 20 | 20 | 20 | 20 | 20 | 20 | 20 | 20 |
| Disaster Relief Fund | 10 | 10 | 10 | 10 | 10 | 10 | 10 | 10 |
| Alumini Association Fees | 25 | 25 | 25 | 25 | 25 | 25 | 25 | 25 |
| Uni Sports & Cultural Activity | 30 | - | 30 | - | 30 | - | 30 | - |
| E - Suvidha | 50 | 50 | 50 | 50 | 50 | 50 | 50 | 50 |
| E - Charges | 20 | - | 20 | - | 20 | - | 20 | - |
| NSS | 10 | 10 | 10 | 10 | 10 | 10 | 10 | 10 |
| Internal Exam Fees | 100 | 100 | 100 | 100 | 100 | 100 | 100 | 100 |
| Project Fees | 2,000 | - | 2,000 | - | 2,000 | - | 2,000 | - |
| Marksheet Fees | 250 | 250 | 250 | 250 | 250 | 250 | 250 | 250 |
| Housekeeping & Maintenance & Security | 2,000 | 2,000 | 2,000 | 2,000 | 2,000 | 2,000 | 2,000 | 2,000 |
| Value Education | 500 | 500 | 500 | 500 | 500 | 500 | 500 | 500 |
| Activity Fee | 1,700 | 1,700 | 1,700 | 1,700 | 1,700 | 1,700 | 1,700 | 1,700 |
| Sports Fee | 500 | 500 | 500 | 500 | 500 | 500 | 500 | 500 |
| Convocation Fee | - | - | - | - | 250 | 250 | 250 | 250 |
| Computer Practicals | - | - | - | - | - | - | 750 | 750 |
| Laboratory Fees | - | - | - | - | - | - | 1,125 | 1,125 |
| Workshop / Seminar / Training Fees | 1,250 | 1,250 | - | - | - | - | - | - |
| Data Storage & Management Fees | 950 | 950 | - | - | - | - | - | - |
| Technical Aid & ICT Fees | 950 | 950 | - | - | - | - | - | - |
| Total Fees Income (A) | 16,495 | 10,925 | 13,475 | 7,775 | 13,725 | 8,025 | 15,600 | 9,900 |
| Refundable Deposits | | | | | | | | |
| Caution Money | 150 | - | - | - | - | - | - | - |
| Library Deposit | 250 | - | - | - | - | - | - | - |
| Laboratory Deposit | - | - | - | - | - | - | 400 | - |
| Refundable (B) | 400 | - | - | - | - | - | 400 | - |
| Total Fees Income + Refundable (A+B) | 16,895 | 10,925 | 13,475 | 7,775 | 13,725 | 8,025 | 16,000 | 9,900 |

COURSE :- MASTER OF COMMERCE (MCOM)

| PARTICULARS | MCOM | | | |
|---|----------------|-------------------|----------------|-------------------|
| | PART I | | PART II | |
| | OPEN (2023-24) | RESERVE (2023-24) | OPEN (2023-24) | RESERVE (2023-24) |
| Fees Income | | | | |
| Tuition Fees | 1,000 | - | 1,000 | |
| Library Fees | 1,600 | - | 1,600 | - |
| Gymkhana Fees | 200 | - | 200 | |
| Other Fees / Extra Curricular Activity | 520 | - | 495 | - |
| Exam Fees | 2,835 | 2,835 | 2,835 | 2,835 |
| Registration Fees | 825 | - | | |
| Admission Processing Fee | 400 | 400 | 400 | 400 |
| Utility Fees | 500 | - | 500 | - |
| Magazine | 100 | - | 100 | |
| I Card | 250 | 250 | 250 | 250 |
| Group Insurance | 20 | 20 | 20 | 20 |
| Student Welfare Fund | 50 | 50 | 50 | 50 |
| Development Fees | 500 | - | 500 | |
| Vice Chancellors' Fund | 20 | 20 | 20 | 20 |
| Disaster Relief Fund | 10 | 10 | 10 | 10 |
| Ashwamedha Fund | 20 | - | 20 | |
| Uni Sports & Cultural Activity | 30 | - | 30 | |
| E - Suvidha | 50 | 50 | 50 | 50 |
| E - Charges | 20 | - | 20 | |
| Project Fees | 2,000 | - | 2,000 | - |
| Marksheet Fees | 250 | 250 | 250 | 250 |
| Housekeeping & Maintenance & Security | 2,000 | - | 2,000 | - |
| Activity Fee | 2,300 | - | 2,200 | - |
| Sports Fee | 500 | 500 | 500 | 500 |
| Convocation Fee | - | - | 250 | 250 |
| Computer Practicals | 3,000 | 3,000 | 3,000 | 3,000 |
| Total Fees Income (A) | 19,000 | 7,385 | 18,300 | 7,635 |
| Refundable | | | | |
| Caution Money | 150 | - | - | - |
| Library Deposit | 250 | - | - | - |
| Refundable (B) | 400 | - | - | - |
| Total Fees Income + Refundable (A+B) | 19,400 | 7,385 | 18,300 | 7,635 |

MASTER OF ARTS (ENGLISH, MARATHI, PHILOSOPHY, HISTORY, SOCIOLOGY & PSYCHOLOGY)

| PARTICULARS | MA (MARATHI, PHILOSOPHY, HISTORY, SOCIOLOGY) | | | | MA (ENGLISH) | | | | MA (PSYCHOLOGY) | | | |
|---|--|----------------------|-------------------|----------------------|-------------------|----------------------|-------------------|----------------------|-------------------|----------------------|-------------------|----------------------|
| | PART I | | PART II | | PART I | | PART II | | PART I | | PART II | |
| | OPEN (2023-24) | RESERVE (2023-24) | OPEN (2023-24) | RESERVE (2023-24) | OPEN (2023-24) | RESERVE (2023-24) | OPEN (2023-24) | RESERVE (2023-24) | OPEN (2023-24) | RESERVE (2023-24) | OPEN (2023-24) | RESERVE (2023-24) |
| Tuition Fees | 5,500 | | 7,475 | | 6,700 | | 9,675 | | 22,600 | | 25,375 | |
| Library Fees | 1,600 | | 1,600 | | 1,600 | | 1,600 | | 1,600 | | 1,600 | |
| Gymkhana Fees | 400 | - | 400 | | 400 | | 400 | | 400 | | 400 | - |
| Other Fees / Extra Curricular Activity | 450 | | 450 | | 450 | | 450 | | 450 | | 450 | |
| Exam Fees | 2,835 | 2,835 | 2,835 | 2,835 | 2,835 | 2,835 | 2,835 | 2,835 | 2,835 | 2,835 | 2,835 | 2,835 |
| Registration fees | 825 | - | - | | 825 | | - | | 825 | | - | |
| Convocation Fees | - | - | 250 | 250 | - | | 250 | 250 | - | | 250 | 250 |
| Admission Processing Fee | 400 | 400 | 400 | 400 | 400 | 400 | 400 | 400 | 400 | 400 | 400 | 400 |
| Utility Fees | 500 | - | 500 | | 500 | | 500 | | 500 | | 500 | - |
| Magazine Fees | 100 | - | 100 | | 100 | | 100 | | 100 | | 100 | - |
| I Card Fees | 250 | 250 | 250 | 250 | 250 | 250 | 250 | 250 | 250 | 250 | 250 | 250 |
| Group Insurance | 40 | 40 | 40 | 40 | 40 | 40 | 40 | 40 | 40 | 40 | 40 | 40 |
| Students Welfare Fund | 50 | 50 | 50 | 50 | 50 | 50 | 50 | 50 | 50 | 50 | 50 | 50 |
| Development Fees | 500 | - | 500 | | 500 | | 500 | | 500 | | 500 | - |
| Activity Fees | 1,800 | - | 1,800 | | 1,800 | | 1,800 | | 1,800 | | 1,800 | - |
| Vice Chancellor's Fund | 20 | 20 | 20 | 20 | 20 | 20 | 20 | 20 | 20 | 20 | 20 | 20 |
| Disaster Relief Fund | 10 | 10 | 10 | 10 | 10 | 10 | 10 | 10 | 10 | 10 | 10 | 10 |
| Ashwamedh Fund | 20 | - | 20 | | 20 | | 20 | | 20 | | 20 | - |
| Univ Sports & Cultural Activity | 30 | - | 30 | | 30 | | 30 | | 30 | | 30 | - |
| E - Suvidha | 50 | 50 | 50 | 50 | 50 | 50 | 50 | 50 | 50 | 50 | 50 | 50 |
| E - Charges | 20 | - | 20 | | 20 | | 20 | | 20 | | 20 | - |
| Project Fees | 1,750 | | 1,750 | | 1,750 | | 1,750 | | 1,750 | | 1,750 | |
| Marksheet Fees | 250 | 250 | 250 | 250 | 250 | 250 | 250 | 250 | 250 | 250 | 250 | 250 |
| Housekeeping & Maintenance & Security | 2,000 | - | 2,000 | | 2,000 | | 2,000 | | 2,000 | | 2,000 | |
| Sports Fees | 500 | 500 | 500 | 500 | 500 | 500 | 500 | 500 | 500 | 500 | 500 | 500 |
| Computer/laboratoy Fees | - | - | - | - | - | - | - | - | 8,500 | 8,500 | 8,500 | 8,500 |
| Total Fees Income (A) | 19,900 | 4,405 | 21,300 | 4,655 | 21,100 | 4,405 | 23,500 | 4,655 | 45,500 | 12,905 | 47,700 | 13,155 |
| Refundable | | | | | | | | | | | | |
| Caution Money | 150 | - | - | - | 150 | - | - | - | 150 | - | - | - |
| Library Deposits | 250 | - | - | - | 250 | - | - | - | 250 | - | - | - |
| Refundable (B) | 400 | - | - | - | 400 | - | - | - | 400 | - | - | - |
| Total Fees Income + Refundable (A+B) | 20,300 | 4,405 | 21,300 | 4,655 | 21,500 | 4,405 | 23,500 | 4,655 | 45,900 | 12,905 | 47,700 | 13,155 |



| | 1 st year | 2 nd year | 3 rd year |
|---|----------------------|----------------------|----------------------|
| Transcript 5 copies (Add. copy Rs. 50.00 each) | 1000 | 1000 | 1000 |
| Admission form+ Prospectus + Inform. Brochure | 100 | 100 | 100 |
| Transfer Certificate | 100 | 100 | 100 |
| Bona fide Certificate | 20 | 20 | 20 |
| No Objection Certificate | 20 | 20 | 20 |

** Subject to change as per new university circular/s

REFUND OF FEES: (UG/412 of 2008)

0.2859: Refund of Tuition, Development and all other fees after cancellation of admissions:

The candidates who have taken admission in undergraduate courses in Govt. colleges, in Govt. **aided** and **unaided courses** conducted by affiliated colleges, and recognized institutions may request for refund of fees after applying in writing for cancellation of their admission to the course.

The refund of fees as applicable shall be made on or before 30th day after the date of cancellation and thereafter. The percentage of fees for the course shall be refunded to the candidate after deducting charges as follows:

Table-1 [Fee Deduction on cancellation of admission]

| Period and Percentage of Deduction Charges | | | | | | |
|--|--|---|---|--|--|------------------------------------|
| | (i) | (ii) | (iii) | (iv) | (v) | (vi) |
| | Prior to commencement of academic term and instruction of the course | Up to 20 days after the commencement of academic term of the course | From 21 st day up to 50 days after commencement of academic term of the course | From 51 st day up to 50 Days After commencement of academic term of the course or August 31 st whichever is earlier. | From September 1 st to September 30 th . | After September 30 th . |
| Deduction Charges | Rs. 500/- Lump sum | 20 % of the total amount of fees. | 30 % of the total amount of fees. | 50 % of the total amount of fees. | 60 % of the total amount of fees | 100 % of the total amount of fees |

NOTE: The total amount considered for the refund of fees from the commencement of academic term of the courses includes the following:

- i. All the fee items chargeable for one year are as per relevant university circulars for different faculties (excluding the courses for which the total amount is fixed by other competent authorities).
- ii. The Fee charged towards group insurance and all fee components be paid as university share (including Vice-chancellor fund, University fee for sports and cultural activities, E- charge, disaster management fund, exam fee and Enrollment fee) are non-refundable if payment is made by the college prior to the date of cancellation.
- iii. Fees collected for Identity card and Library card, admission form and prospectus, enrollment and any other course specific fee **are not refunded** after the commencement of the academic term.
- iv. All refundable deposits (Laboratory, Caution Money and Library etc.) **shall be fully returned** at the time of cancellation.

Provided that wherever admissions are made through centralized admission process for professional and/ or for any other courses by other competent Authorities, the Refund Rules are applicable if specified by such authorities (as per the rules of relevant agencies) for the 1st year admission. In case of admission to subsequent years of the course, O. 2859 is applicable for cancellation of admission. Provided further that this refund rule is concurrent with the rules and guidelines of other professional statutory bodies for admission for relevant courses.

Further that O.2859-A & O.2859-B have been repealed and the amended O.2859 relating to the refund of Tuition Fees, Development and all other fees after cancellation of admission for the Undergraduate Courses has been brought into force with effect from the academic year 2008-2009.

List of Toppers 2021 – 2022
OVERALL, TOPPER M.A. / M.COM. / B.A. / B.COM.

| | | | |
|-----------|-------------------|---------------------------------------|-------------|
| MA | ENGLISH | CHHADWASIDDHARTH MAHESH | 1327 |
| | HISTORY | SOLANKI ANJANA MAHESH | 1414 |
| | MARATHI | KAMBLE SHARMISHTHA SUDHIR SULAKSHAANA | 660 |
| | PHILOSOPHY | SAKPAL MANASEE SANTOSH | 1099 |
| | PSYCHOLOGY | MS. ISAAC TALITHA JOANNA | 1516 |
| | SOCIOLOGY | MRUNAL KSHIRSAGAR | 1212 |

| | | | |
|--|----------------------------------|-----------------------|-------------------|
| OVERALL, TOPPER M.COM ACCOUNTANCY | JAIN SIDDHI NARENDRA | 1445/1600 | |
| OVERALL, TOPPER B. A | RAWAT SHREYA BIRENDRASINGH | 1065/ 1600 | GPA 10 |
| OVERALL, TOPPER B.COM | SHERIFF SUMERA MUJIBULLA SHABANA | 1310/ 1600 | GPA 10 |
| OVERALL, TOPPER M.A | | | |

LIBRARY BEST BOOK READER AWARD FOR THE ACADEMIC YEAR 2021 – 2022. Senior College:

| No. | NAME | Roll No. | Class/Div. |
|----------|--------------------|-----------|----------------|
| 1 | AFIDA USMAN SHAIKH | 92 | TYBA- A |

Academic Prize Winners / Subject Toppers 2022-2022

| | | | |
|--------------------|------------------|----------------------------------|----------|
| ACCOUNTANCY | FYBCOM | MACKY KAIF NADEEM SHABANA | 189/ 200 |
| | SYBCOM | SAVLA DEEP LINESH SHWETA | 195/ 200 |
| | TYBCOM (F.A-I) | SHERIFF SUMERA MUJIBULLA SHABANA | 197/ 200 |
| | TYBCOM (F.A-II) | SHERIFF SUMERA MUJIBULLA SHABANA | 190/ 200 |
| | TYBCOM (F.A-III) | SHERIFF SUMERA MUJIBULLA SHABANA | 189/ 200 |
| | TYBCOM (TAX) | DHULLA JASMIN MANOJ MEENA | 186/ 200 |

| | | | |
|-----------------|----------------|---|------------------------|
| COMMERCE | FYBCOM | MACKY KAIF NADEEM SHABANA | 189/ 200 |
| | SYBCOM(COMM.) | BAIRI TANUJA SARATHI VISHWAKARMAGANESH GOPAL | 191 / 200 191 / 200 |
| | SYBCOM (ADVT.) | KHAN FARAAZ SHERKHAN | 196/ 200 |
| | TYBCOM(EXPORT) | SHAIKH RAASHID ANWAR AHTHESHAA | 184 / 200 |
| | TYBCOM (MHRM) | 1. SHEKASON MOHD AFTAB WASIM ZAVERIYA | 196/ 200 |
| | | 2. DUBARIYA NARENDRA NARAYAN | 196/ 200 |
| | SYBA (B.K) | AGRAWAL POOJA MEENA AGRAWAL | 195 / 200 |

| | | | |
|------------------|--------|--|-------------|
| ECONOMICS | FYBA | KIDANGIL GOPIKA REVI SUJATHA | 189 / 200 |
| | SYBA | FUTANE PRATHAMESH KUSH KALPANA | 394 / 400 |
| | TYBA | PIYUSH PRASHANT BIRENDRA KUMAR PRAMILA KUMAR | 1094 / 1200 |
| | FYBCOM | MACKY KAIF NADEEM SHABANA | 184 / 200 |
| | SYBCOM | VISHWAKARMA GANESH GOPAL NISHA | 184 / 200 |
| | TYBCOM | SHRIVASTAVA AKANKSHA SUNIL SILUDEVI | 194 / 200 |
| | | YADAV ANKUR JAIRAM DEVMATI | 194 / 200 |

| | | | |
|----------------|-------------------|---|-------------|
| ENGLISH | FYBA (A) | SURVE PURVA MILINDNEELAM | 183 / 200 |
| | | SINGH RAJVI RAJIVVINEETA | 183 / 200 |
| | FYBA (C) | BHATTACHARYA AYONNYA SHARBORI | 182 / 200 |
| | | CHOPRA KOMAL SANJEEV MAMTA | 182 / 200 |
| | SYBA | MULLA SAMIYAHRIAZ AHMED YASMIN | 358 / 400 |
| | SYBA (JOUR.) | TIWARI SHANYANITA | 185 / 200 |
| | SYBA (MASS COMM.) | KALARIKKAL ARCHANA ARAVINDAKSHAN VINEETHA | 173 / 200 |
| | TYBA | SIDDHANT MALVANKAR | 1073 / 1200 |
| | FYBCOM (B.C) | ADEPU DIVYA RAMMOHAN SUVARNA | 180 / 200 |

| | | | |
|------------|--------|--------------------------|-----------|
| EVS | FYBCOM | MISTRY NIMIT SUNIL BINAL | 166 / 200 |
|------------|--------|--------------------------|-----------|

| | | | |
|--|--------|-----------------------------------|-----------------|
| FOUNDATION COURSE and OPTIONAL SUBJECTS | FYBA | CHOPRA KOMAL | 191 / 200 (F.C) |
| | | MORAJKAR MANSI | 191 / 200 (F.C) |
| | FYBCOM | MAV HARSHAKUMAR MAVJIBHAI VIMLA | 182 / 200 (F.C) |
| | SYBA | CHHABRA SNEHA | 194 / 200 (F.C) |
| | SYBCOM | DCRUZ ERICA CYNTHIA AUNDRE ALTHEA | / 200 |

| | | | |
|-----------------|------|-------------------------------|------------|
| GUJARATI | FYBA | WAGHELA RIDDHI ANIL | 183 / 200 |
| | SYBA | BHANUSHALI BHAKTI HARISHKUMAR | 378 / 400 |
| | TYBA | VAN NISHA BECHAR | 116 / 1200 |

| | | | |
|--------------|------|--------------------------------|-------------|
| HINDI | FYBA | GUPTA KASHISH DHARMENDRA VINDA | 193 / 200 |
| | SYBA | CHHABRA SNEHASIMMI CHHABRA | 387 / 400 |
| | TYBA | SANGOI DRASHTINIKESH BEENA | 1129 / 1200 |

| | | | |
|----------------|------|------------------------------------|-------------|
| HISTORY | FYBA | BHANDARKAR TEJASWINI MILIND MANASI | 172 / 200 |
| | SYBA | SHAH KATHAN KAMLESH SUPRIYA | 391 / 400 |
| | TYBA | DAS SHITAL MINTU | 1063 / 1200 |

| | | | |
|-----------------|--------|------------------------------|-----------|
| BUS. LAW | SYBCOM | ALMEIDA JOSEPHINE JOHN ANITA | 194 / 200 |
|-----------------|--------|------------------------------|-----------|

| | | | |
|----------------|----------|---------------------------------|------------|
| MARATHI | FYBA (A) | MORE PRATIKSHA PRAKASH USHA | 184 / 200 |
| | FYBA (C) | SURYAVANSHI ANKITA VIKAS CHHAYA | 191 / 200 |
| | SYBA | KAMBLE SHUBHANGI UTTAM PUSHAPA | 385 / 400 |
| | TYBA | KARPE PRAJAKTA KRISHNAT | 999 / 1200 |

| | | | |
|--------------------|--------------|-----------------------------|-----------|
| MATHEMATICS | FYBCOM | THAKKAR HASTI BHAVESH HEENA | 195 / 200 |
| | TYBCOM(CSA.) | GOR KISHAN ASHISH KAMLA | 182 / 200 |

| | | | |
|-------------------|------|-------------------------|-------------|
| PHILOSOPHY | FYBA | GOR DIVYA MUKESH SHOBHA | 153 / 200 |
| | SYBA | ARON MANAN ASHISH DIVYA | 347 / 400 |
| | TYBA | GUPTA SHASHANK DROPTI | 1049 / 1200 |

| | | | |
|--------------------------|------|----------------------------------|-------------|
| POLITICAL SCIENCE | FYBA | YADAV ROHIT ASHOK AMRITMANI | 169 / 200 |
| | SYBA | MULLA SAMIYAH RIYAZ AHMED YASMIN | 363 / 400 |
| | TYBA | SINGH SIDDHARTH SANJAY | 1043 / 1200 |

| | | | |
|-------------------|--------|------------------------------|-------------|
| PSYCHOLOGY | FYBA | SAIFY SAKINA KULSOOM | 189 / 200 |
| | SYBA | CHHABRA SNEHA SIMMI CHHABRA | 378 / 400 |
| | TYBA | THACKER CHAITALI PANKAJ | 1126 / 1200 |
| | TYBCOM | KOOTALA RICHA LAWRENCE BEENA | 192 / 200 |

| | | | |
|-----------------|----------|--------------------------------|-------------|
| SANSKRIT | FYBA (A) | KULKARNI NIDHI PRASHANT PURAV | 188 / 200 |
| | FYBA (C) | MORAJKAR MANASI MAHESH SUPRIYA | 195 / 200 |
| | SYBA | NEHA ADAK DATTATRAYA SUMAN | 386 / 400 |
| | TYBA | GAURI RAIKAR | 1154 / 1200 |

| | | | |
|------------------|------|----------------------------------|-------------|
| SOCIOLOGY | FYBA | KADAM TANISHKA JITENDRA KSHITIJA | 187 / 200 |
| | SYBA | SONI RADHIKA TARUN AMITA | 373 / 400 |
| | TYBA | DSOUZA CRISTIBELL RICHARD | 1145 / 1200 |

| | | | |
|---------------------------------------|---------------------------------|---------------------------------|----------|
| Self-Financing Departments | BBI (SEM V/VI) | MESTRY AARADHYA AJIT SAMRUDDHI | 542/600 |
| | | MESTRY AARADHYA AJIT SAMRUDDHI | 532/600 |
| | BFM (SEM V/VI) | JOSHI MOHIT MANIK | 536/600 |
| | | MRUNAL DILIP GURAV | 551/600 |
| | BMM (SEM V/VI) | MHATRE SHARVARI VINAYAK SWATI | 633/700 |
| | | VISHWANATH NIDHI ANU | 636/700 |
| | BIM (SEM V/VI) | PATIL RAKSHA VIJAYKUMAR SANGITA | 540 /600 |
| | | PATIL RAKSHA VIJAYKUMAR SANGITA | 500 /600 |
| | BMS (SEM V/VI) | BANSOD NEHA RAVINDRA HEMANGINI | /600 |
| | | BANSOD NEHA RAVINDRA HEMANGINI | /600 |
| BAF (SEM V/VI) | KADU SIDDHESH DATTARAM DARSHANA | /600 | |
| | KADU SIDDHESH DATTARAM DARSHANA | /600 | |

ATTENDANCE & OTHER RULES

- The following shall be the rules pertaining to minimum attendance necessary for keeping terms for B.A./B.Com. students:
- First Term: Minimum 75% attendance per term.
- Second Term: Minimum 75% attendance per term.
- 0.125: To keep a term at a college or recognized institution, an undergraduate must complete to the satisfaction of the Principal or Head of the Institution the course of study at the college or institution prescribed for such terms for the class to which such undergraduate then belongs.

Code of Conduct for Students

1. All the students who have taken admission in the College must possess a valid Identity Card. (Identity cards are issued by the College in the beginning of the first term). Students must carry with them their identity cards and should produce when demanded by the Teaching and Non-Teaching staff.
2. Identity Card should be carefully preserved, and the holder of the Identity Card will be held responsible for its misuse. In case of loss of Identity Card a duplicate must be obtained by paying the prescribed charges with due procedure.
3. Students should read the notices on the Notice Boards daily.
4. Students should submit applications for scholarships / free ships etc. as also the Enrolment Form (for first year degree students) on time as per the notices put up on the Notice Board.
5. Students must maintain silence in the classes, Library, Reading Room, Office, laboratories and the corridors. When they are free, they should make use of the College Library, of the Students Common Room, and must not loiter on the college premises or assemble in the corridor, or the Prayer Hall. Loud conversation and shouting should be avoided.
6. Dress and Hair Style should be in conformity with the standards accepted by the institution.
7. Absence in any one lecture on a day will lead to losing attendance for the whole day. Minimum 75% attendance and satisfactory progress in studies are the essential requirements for students to become eligible to be sent up for board/ university/ college examinations.
8. Admission to a particular class does not automatically guarantee admission to higher classes in future. Admission to all classes will be on the basis of performance and availability of seats.
9. Smoking is strictly prohibited in the building and on the campus.
10. Use of mobile phones is strictly prohibited in the classrooms. Use of mobile phones with Camera and Tape recorder are strictly prohibited in the campus. Individual tapes and cameras are also not allowed.
11. The Candidate should remain personally present at the time of Admission.

K J SOMAIYA COLLEGE OF ARTS AND COMMERCE
TEACHING STAFF LIST 2023-24
I/C PRINCIPAL- DR (SMT) VEENA SANEKAR
VICE PRINCIPAL - DR. SATYAWAN HANEGAVE
DEAN, EXTENSION & RESEARCH ACTIVITIES - DR. ATISH TAUKARI
DEAN, ACADEMIC AFFAIRS - DR. (MS.) HEMALI SANGHAVI

| Sr | ENGLISH | | PHILOSOPHY |
|----|--|----|-------------------------------------|
| | | 22 | DR. (SMT.) MAITHILI GUPTE |
| 1 | DR. HANEGAVE SATYWAN SUDHAKARRAO (H.O.D.) | | |
| 2 | SMT MEERA VENKATESH | | PSYCHOLOGY |
| 3 | SMT. AMRUTA PRASAD GANGAN | 23 | SMT SONAL R JAMBHEKAR (H.O.D) |
| 4 | SHRI SACHIN NARAWADE | 24 | DR ATISH TAUKARI |
| 5 | SHRI LOKDU MORE | 25 | SHRI SHASHANK NIKUMBH |
| | | | |
| | SANSKRIT | | MATHEMATICS/STATISTICS |
| 6 | DR MRUNAL BHATT (H.O.D) | | |
| 7 | DR. PRASAD R. BHIDE | 26 | DR (MS.) MANGALA DESHPANDE (H.O.D) |
| | | 27 | SHRI U. S TAMBE |
| | GUJARATI | 28 | SHRI MAHESH DRAVID |
| 8 | DR. HITESH PANDYA | 29 | DR. (SMT) SANGEETA BHAT |
| | | 30 | SHRI RAJESH K |
| | | 31 | SMT. DEBADATTA ROY CHOUDHARY |
| | | 32 | MS. PRATIMA KADU |
| | MARATHI | | |
| 9 | Dr (SMT) VEENA SANEKAR (H.O.D) | | COMMERCE |
| 10 | SHRI ABHIJIT DESHPANDE | 33 | DR. DEELIP PALSAPURE (H.O.D) |
| | | 34 | DR.(SMT.) SONALI DEOGIRIKAR |
| | HINDI | 35 | DR. MAYURESH MULE |
| 11 | DR (SMT) VIJAYSHREE PARAMESWARAN (H.O.D) | 36 | SMT. JASMINE RAI |
| | | 37 | DR.(SMT.) SHOBHA MATHEW |
| | | | ACCOUNTANCY |
| | ECONOMICS | 38 | SMT KETAKI KETKAR (H.O.D.) |
| 12 | DR.(SMT.) SHUBHANGI PATIL(H.O.D.) | 39 | MR NILESH AGARWAL |
| 13 | DR. MAHENDRA MISHRA | 40 | MR. AMOL BHOSALE |
| 14 | DR. SUNIL CHANDANSHIVE | 41 | MR. MAYUR SHELKE |
| 15 | MRS. DEEPALI TORASKAR | 42 | DR. RAHUL JAGTAP |
| 16 | DR. (MS.) FLORA PANDYA | | |
| | | | BUSINESS LAW |

| | | | |
|----|--|----|--------------------------------------|
| | | 43 | SMT. MONIKA SAWANT (H.O.D.) |
| | SOCIOLOGY | 44 | DR. SANDIP YADAV |
| 17 | DR. (SMT.) ROHINI FADTE (H.O.D) | | |
| | | | |
| | POLITICAL SCIENCE | | ENVIRONMENTAL STUDIES |
| 18 | DR. (SMT.) A. R. KAMBLE(H.O.D) | 45 | SHRI SANDEEP KULKARNI(H.O.D.) |
| 19 | MR. GAURAV KALE | 46 | MS MAMATA TENDULKAR |
| | | | |
| | HISTORY | | LIBRARIAN |
| 20 | DR. HEMALI SANGHAVI (H.O.D.) | 47 | SHRI ANIL GAWARE |
| 21 | DR. GAURAV GADGIL | | |

UNAIDED SECTION – NON-TEACHING STAFF - CLASS III & CLASS IV

| SR.NO. | NAME OF EMPLOYEE | DESIGNATION |
|------------------|-------------------------|-------------------|
| Class III | | |
| 1 | MR. A. D. KAMBLE | HEAD CLERK |
| 2 | MR. G.B. KALE | SENIOR CLERK |
| 3 | MRS. URMILA AGAWANE | SENIOR CLERK |
| 4 | MR. SUNIL JAKATE | SENIOR CLERK |
| 5 | MRS. PALLAVI GHATGE | JUNIOR CLERK |
| 6 | MRS. SARIKA SAWANT | JUNIOR CLERK |
| 7 | MR. ARJUN RATHOD | JUNIOR CLERK |
| 8 | MR. VIJAY KADU | LIBRARY CLERK |
| 9 | MRS. SUPRIYA JAGTAP | JUNIOR CLERK |
| 10 | MR. YOGESH TALAWADEKAR | JUNIOR CLERK |
| 11 | MR. NILESH PEDNEKAR | LIBRARY CLERK |
| 12 | MR. SHYAM CHOUDHARI | LIBRARY CLERK |
| 13 | MR. AMIT MONDE | JUNIOR CLERK |
| 14 | MR. MANOJ THAKUR | JUNIOR CLERK |
| 15 | MR. RAJU AUNOOR | JUNIOR CLERK |
| Class IV | | |
| 1 | MR. GOPAL BAING | LIBRARY ATTENDANT |
| 2 | MR. D.C. TALAVIA | LIBRARY ATTENDANT |
| 3 | MR. SANJAY GOSAVI | LIBRARY ATTENDANT |
| 4 | MR. J. S. BALMIKI | LIBRARY ATTENDANT |
| 5 | MR. DEEPAK KANBI | LIBRARY ATTENDANT |
| 6 | MR. D. S. LAGAD | LIBRARY ATTENDANT |
| 7 | SMT. USHA LOKHANDE | PEON |
| 8 | MR. SHANKAR RATHOD | LIBRARY ATTENDANT |
| 9 | MR. VINOD TIWARI | LIBRARY ATTENDANT |
| 10 | MR. D. S. SANGLE | LIBRARY ATTENDANT |
| 11 | MR. SURYAKANT GONBARE | LIBRARY ATTENDANT |
| 12 | MR. LAXMAN SHEDGE | LIBRARY ATTENDANT |
| 13 | MR. MAHESH KEVANE | LIBRARY ATTENDANT |
| 14 | MR. BHUSHAN WADYEKAR | LIBRARY ATTENDANT |
| 15 | SMT. ANURADHA PARAB | PEON |
| 16 | MR. MADAN BABAR | LIBRARY ATTENDANT |
| 17 | MR. AVINASH VISHE | PEON |
| 18 | MR. PRASHANT AMBERKAR | PEON |
| 19 | MR. AJINKYA MANE | PEON |
| 20 | MR. AVINASH YADAV | PEON |
| 21 | MRS. REKHA GADGE | PEON |
| 22 | MR. SURENDRASING RAJPUT | PEON |
| 23 | MR. AVINASH SALUNKE | PEON |



| | | |
|----|-----------------------|------|
| 24 | MR. TUSHAR SONAWANE | PEON |
| 25 | MS. MANGALA AMBERKAR | PEON |
| 26 | MR. KANCHAN MANDAVKAR | PEON |
| 27 | MR. SIDDHESH SHINDE | PEON |
| 28 | MR. GANESH NADALE | PEON |
| 29 | MR. SOPAN CHAVAN | PEON |

(UNAIDED SECTION) - NON-TEACHING STAFF - CLASS III & CLASS IV

| SR NO | NAME OF EMPLOYEE | POST |
|--------------|-------------------------|--------------|
| 1 | PRIYANKA JOGLEKAR | REGISTRAR |
| 2 | SANTOSH SATHE | JUNIOR CLERK |
| 3 | MAHADEV S UMASARE | PEON |
| 4 | MANIRAM YADAV | LIB ATTEND |
| 5 | SUJATA VIKAS SHINDE | LIB CLERK |
| 6 | CHETAN B SHINDE | SENIOR CLERK |
| 7 | MANORAMA NAYAKAWADE | JUNIOR CLERK |
| 8 | KIRAN DATTATREY KALAMBE | ACCOUNTANT |

COUNTERWISE WORK DISTRIBUTION

| Counter No. | Work Distribution |
|--------------------|--|
| 1 | Related to junior college students i.e. bonafide certificates, HSC examination forms, Leaving Certificates, Duplicate Marksheets, eligibility, junior college progress report, examination work, true copies (Junior & Degree) |
| 2 | Fees/miscellaneous cash collection, refund of fees for junior college. |
| 3 | Fees/miscellaneous cash collection, refund of fees for degree college. |
| 4 | Related to degree college, bonafide certificates, railway concessions for SYBCom/SYBA classes, stamping on trust forms and other forms, railway concession to junior college students, character certificates, recommendation letter |
| 5 | Concession forms for FYBCom/FYBA/MCom students, enquiry counter, cancellation of admission, hall tickets |
| 6 | Related to degree college students, enrolment, eligibility, migration, railway concession for TYBCom/TYBA students, NOC |
| 7 | Related to junior and degree college, free ship/ scholarships, other financial assistants, duplicate i-cards |
| 8 | Staff related matters |
| 9 | Transcript (Junior and degree college), any work related to examination (degree college) |
| 10 | Degree college related verification and revaluation, duplicate marksheets, convocation certificates, any other work related to examinations. |
| 11 | Staff related work |
| 12 | Related to degree college, all university examination forms, transfer certificates, PHD related work |
| 13 | Online verification of TC and Marksheets (Degree College) |
| 14 | Accounts related |
| 15 | Accounts related |

ACADEMIC CALENDAR - 2023-24

2023

First Term - 13th June to 11th November 2023 (Both Days Inclusive)

| | |
|--|--|
| 13 th June | Reopening of the Degree College |
| 13 th June | S.Y.B.A./B.Com. & T.Y.B.A./B.Com. Regular Lectures to begin. |
| 29 th June | Holiday – Bakri Id |
| July | Principal’s Address to F.Y.B.A. & F.Y.B.Com. Students |
| 29 th July | Holiday - Muharram |
| 15 th August | Independence Day – Flag Hoisting |
| 16 th August | Holiday – Parsi New Year |
| 19 th September | Holiday – Ganesh Chaturthi |
| 19 th September to 23 rd September | } Mid Term Break |
| 28 th September | Holiday - Id-E-Milad |
| September (End) | Term End & ATKT/ Examination begin for all classes |
| 2 nd October | Holiday - Mahatma Gandhi Jayanti |
| 24 th October | Holiday - Dassera |
| 13 th November to 27 th November | } Diwali Vacation (Both the Days Inclusive) |
| 14 th November | Holiday – Balipratipada, Deepavali Padwa |
| 27 th November | Holiday – Guru Nanak Jayanti |

Second Term 28th November 2023 to 1st May 2024 (Both Days inclusive)

| | |
|--|--|
| 28 th November | College re-opens after Diwali Vacation |
| 30 th November | Declaration of Semester End /ATKT Exams results. |
| December | Parents Day Meeting |
| December | Cultural Activities Hooper |
| 25 th December | Christmas |
| 25 th Dec 2023 to 31 st Dec 2023 | } Winter Break |

2024

| | |
|---------------------------|--|
| 1 st January | College re-opens after Winter Break |
| 26 th January | Republic Day – Flag Hoisting |
| 19 th February | Chhatrapati Shivaji Maharaj Jayanti |
| February | Prize Distribution Function / Convocation Ceremony |



| | |
|------------------------|---|
| 8 th March | Holiday – Mahashivratri |
| 25 th March | Holiday – Holi (Second Day) |
| 29 th March | Holiday - Good Friday |
| March (End) | Term End & ATKT/ Examination begin for all classes. |
| 9 th April | Holiday - Gudi Padwa |
| 11 th April | Holiday – Eid-ul-Fitr |
| 17 th April | Holiday – Ram Navami |

Following holidays appears on Sunday-

- 1) 12th November 2023 Holiday - Diwali – Laxmi Pujan
- 2) 14th April 2024 Holiday - Dr Babasaheb Ambedkar Jayanti
- 3) 21st April 2024 Holiday - Mahavir Jayanti

The college administration reserves the right to change the above calendar.

The list of Members of the Academic Council

| Sr. No. | Name of the Member | Category |
|---------|--|-------------------------|
| 1. | Dr. Veena Sanekar, I/C Principal, K. J. Somaiya College of Arts & Commerce, Mumbai | I/C Principal |
| 2. | Dr. Shobhana Vasudevan Principal, Poddar College, Mumbai, | VC Nominee |
| 3. | Dr. Vidyagauri Vivek Lele Principal, Acharya College, Mumbai, | VC Nomine |
| 4. | Prof. Aruna Deshpande Dinesh Modi Institute | VC Nominee |
| 5. | Dr. Sushilkumar Chaudhary | J D Nominee |
| 6. | Dr Satyawan S Hanegave, Head Department of English | Vice Principal |
| 7. | Dr. Hemali Sanghavi, Head, Dept. of History | Dean, Academic Affairs, |
| 8. | Dr. Abhinaya Kamble – Head, Dept of Political Science | Member |
| 9. | Dr Mangala Deshpande, Head- Dept. of Mathematics & Statistics | Member |
| 10. | Mrs. Sonal Jambhekar – Head. Dept. of Psychology | Member |
| 11. | Dr. Vijayshree Parmeshwaran – Head, Dept. of Hindi | Member |
| 12. | Dr Deelip Palsapure – Head, Dept of Commerce | Member |
| 13. | Dr Rohini Fadate – Head, Dept of Sociology | Member |
| 14. | Dr Mrunal Bhatt – Head, Dept of Sanskrit | Member |
| 15. | Mr.Sandeep Kulkarni, Head, EVS Department | Member |
| 16. | Dr.Shubhangi Patil - Head, Dept of Economics | Member |
| 17. | CA Ketaki Ketkar, Head Department of Accountancy | Member |
| 18. | Smt. Monika Sawant – Head, Dept of Business Law | Member |
| 19. | Dr Maithili Gupte – Head, Dept of Philosophy | Member |
| 20. | Dr Hitesh Pandya – Head, Dept of Gujarati | Member |

| | | |
|-----|---|----------------------------------|
| 21. | Mr.Shashank Nikumbh, Coordinator, Foundation Course | Member |
| 22. | Mr. Abhijit Deshpande, Coordinator, MA Marathi | Member |
| 23. | Dr Sonali Deogirikar – Co-ordinator, M.Com. | Member |
| 24. | Shri Mahesh Dravid – Assistant Professor Dept. of Mathematics & Statistics | Invited Senior Faculty Member |

SOMAIYA VIDYAVIHAR

Founder: Padmabhushan (Late) Shri Karamshi J Somaiya

First President: (Late) Justice N. H Bhagavati

Past Distinguished Members of the Managing Council

| | |
|--------------------------------------|---------------------------------------|
| Late Dr.Dharamashi GhelaralmVyas | Late Shri Mohanlal T. Mehta (Sopan) |
| Late Shri Hansraj Jeevandas Mirani | Late Shri Varadhbhai L. Patel |
| Late Prof. Chandulal Nagindas Vakil | Late Dr. Smt. Madhuriben R. Shah |
| Late Dr. Manubhai Pranjivan Vaidya | Late Prin. Smt. Jashwantiben O. Desai |
| Late Prof.Manohar Ramchandra Palande | Late Shri. Ramakrishna Bajaj |
| Late Shri Tulsidas Mulji Sheth | Late Smt. Sakarbai K. Somaiya |
| Late Prof. Shripad G. Hulyalkar | Late Shri. M. Menezes |
| Late Shri K.N. Sundaram | |
| Late Shri Dattatraya Dhondo Gadgil | |

**Managing Council of Somaiya Vidyavihar
for the Academic Year 2023-24**

| Sr. No | Name of the Members | Designation |
|---------------|---------------------------------|--------------------|
| 1. | Shri. Samir S. Somaiya | President |
| 2. | Smt. Leelaben M. Kotak | Member |
| 3. | Smt. Savitriben H. Daiya | Member |
| 4. | Smt. Jankiben B. Thakkar | Member |
| 5. | Smt. Bharatiben V. Thakkar | Member |
| 6. | Smt. Pratimaben P. Thakkar | Member |
| 7. | Smt. Amrita S. Somaiya | Member |
| 8. | Shri. Amol Shah | Member |
| 9. | Shri. Miten K. Sachade | Member |
| 10. | Smt. Harinakshi S. Somaiya | Member |
| 11. | Shri. Nandan Mehta | Member |
| 12. | Shri. Bimal Mehta | Member |
| 13. | Shri. Jatin Thakkar | Member |
| 14. | Mataji Swami Tanmayanandji | Member |
| 15. | Shri. Porus Olpadwalla | Member |
| 16. | Shri. T. Nandkumar | Member |
| 17. | Shri Ravinder Singh Chauhan | Member |
| 18. | Shri. Naresh Khetan | Member |
| 19. | Lt. Gen. Jagbir Singh | Hon. Secretary |
| 20. | Prof. V. N. Rajasekharan Pillai | Member |
| 21. | Dr. Raghunath Shevgaonkar | Member |
| 22. | Shri. Faraz Kagalwalla | Treasurer |

KJ SOMAIYA COLLEGE OF ARTS & COMMERCE (AUTONOMOUS)

Governing Body

| Sr. No | List of Members | Remarks |
|---------------|----------------------------------|--|
| 1. | Shri Samir Somaiya | Chairperson |
| 2. | Lt. General Jagbir Singh (Retd.) | Member (Secretary, SVV) |
| 3. | Prof. Raghunath Shevgaonkar | Member (Provost, SVV) |
| 4. | Dr. Preeti Rawat | Member (GM, HR Dept. SVV) |
| 5. | Dr. (Smt.) Veena Sanekar | In-charge Principal, KJSAC |
| 6. | Prof. Rupaben Shah | Member - Governing Body (Educationist) |
| 7. | Dr. Pragnesh Shah | Member (UGC Nominee) |
| 8. | Dr.Kinnrey Thakker | Member (VC Nominee) |
| 9. | Shri Faraz Kagalwala | Chief Finance Officer Somaiya Trust |
| 10. | Dr. Sushilkumar Chaudhari | Member (Nominee of Jt. Director) |
| 11. | Mrs. Sonal Jambhekar | Nominated Head of the Department |
| 12. | Dr. Satyawan Hanegave | Vice-Principal and IQAC Coordinator, KJSAC |
| 13. | Smt.Babita Krishnan | Invited Faculty from Somaiya Vidyavihar |
| 14. | Dr. Atish Taukari | Dean, Research and Extension Activities |
| 15. | Dr. Hemali Sanghavi | Dean, Academic Affairs |
| 16. | Shri Jaideo Rajgopal | Member (Alumnus) |
| 17. | Shri Shayjo Paul | Member (Alumnus) |



CONTACT INFORMATION

| | |
|-----------------------------|--|
| 1. DR. (SMT.) VEENA SANEKAR | I/C Principal: Tel. No. 21023650 |
| 2. DR. SATYAVAN HANEGAVE | Vice- Principal : 21022915 |
| 3. DR.(MS.) HEMALI SANGHAVI | Dean : 21022915 |
| 4. DR. ATISH TAUKARI | Dean : 21022915 |
| 5. Staff Office | Tel. No. 21022915 |
| | |
| FAX NO.: | +91-22- 21020367 |
| | |
| E-Mail: | principal@kjsac.somaiya.edu |
| | |
| ENQUIRY: | enquiry@kjsac.somaiya.edu , |
| | |
| WEB PAGE: | https://kjsac.somaiya.edu |